



GLOSTER







*choose a space
under the open sky
and make it your own*



50 years. It sounds like a lifetime, yet in many ways it comes around in the blink of an eye...

We first started making furniture exactly fifty years ago in West Africa in 1960. Firstly just for local market consumption but then, when we realized we were actually quite good at it, for export to Europe. From the start we were always both environmentally and ethically aware - we even used the discarded branches and tree stumps, which would otherwise have been burnt, to make the smaller components.

Within ten years we became the largest furniture producer in Africa supplying components and finished furniture to many of the top indoor brands in Europe.

Thirty years ago, in 1981, we started the Gloster brand. From quite humble roots, we manufactured traditional teak garden benches in Bristol, England and once again were soon exporting our furniture all around the world. In the 1970's we transferred our African factory's expertise to Asia so that we could have access to the plantation grown teak that was only available in Indonesia.

Over the 80's and 90's Gloster grew to be the principle high end world wide brand for teak outdoor furniture. At the end of the 1990's Gloster diversified into different types of furniture and now, fifty years since we started, we are worldwide leaders in teak, woven, aluminum, stainless steel and now outdoor lounge furniture.

Many competitors have come and gone in this time, yet Gloster, just like our furniture, endures. And, as it was right at the start, we remain committed to green and ethical policies in everything we do.



CONTENTS

TEAK	LIFESTYLE IMAGES	SPECIFICATIONS
ACCESSORIES	-	122 - 123
ANASSA	38 - 39	104 - 107
AXIS	34 - 35	116
BELMONT	18 - 19	114
BRISTOL	-	120 - 121
ESTATE	42 - 45	119
ESTRADA	28 - 31	117
FUSION	32 - 33	131
HALIFAX	40 - 41	108 - 109
KINGSTON	22 - 27	112 - 113
NEXUS	-	132
SOLANA	20 - 21	114
SQUARE	36 - 37	118
TRADITIONAL	-	115
VENTURA	10 - 17	110 - 111
OUTDOOR LOUNGE	LIFESTYLE IMAGES	SPECIFICATIONS
BLOC	54 - 59	127
CLOUD	48 - 53	124 - 126
SLING / METAL	LIFESTYLE IMAGES	SPECIFICATIONS
AZORE	70 - 73	128 - 129
FUSION	62 - 65	131
KORE	-	133
LUNA	74 - 75	130
VIGO	66 - 69	132
WOVEN	LIFESTYLE IMAGES	SPECIFICATIONS
CASABLANCA	94 - 95	142 - 143
ECLIPSE	100 - 101	137
GENEVA	-	132
HAVANA	78 - 85	134 - 135
HAVANA MODULAR	86 - 89	136
HORIZON	98 - 99	144
HORIZON CLUB	96 - 97	145
PLANTATION	92 - 93	140 - 141
PLANTATION SECTIONAL	90 - 91	138 - 139

ABOUT GLOSTER

Gloster's origins as furniture makers go back more than 40 years and today the Gloster name is synonymous worldwide with the best design and the highest quality in outdoor furniture.

Key to our philosophy is the belief that outdoor furniture is as important a style statement as indoor furniture, hence our range incorporates both classic and modern designs to cater for all tastes and requirements. From the traditional to the contemporary, there is something for everyone in the Gloster range.

Whilst we are well known for our teak furniture, recent years have seen the arrival in our range of the, alternative and modern, materials of sling, stainless steel, aluminum and man-made wicker fiber.

However, whatever the raw material used, we believe that quality is everything - we do not cut any corners or manufacture our products to any price-point. You will be able to find cheaper outdoor furniture, but you will not find better...

We hope that you choose Gloster furniture for your home or garden, and having done so we are confident that you will enjoy it for many years to come.

MANUFACTURING

Gloster furniture is selected by the most demanding customers who insist on the best and so we believe that we have to be the very best in all that we do - starting with the manufacturing.

Gloster has its own factory near Surabaya in Java, Indonesia which we started nearly 20 years ago. Here we use both traditional and modern methods to achieve production standards that usually well exceed those of most other indoor and outdoor furniture manufacturers. The factory is located close to the teak plantations, is run by a European management team and employs over 800 people.

In addition to teak, Gloster is expert in the use of a variety of materials for the manufacture of our furniture. Extensive use is made of stainless steel, powder coated aluminum, man-made wicker and sling material and there are specialist departments within the factory entirely devoted to the working of these materials to the same high standards as our teak components.

We also work in partnership with a few select manufacturers who have specialist skills and techniques that we do not have in our own manufacturing plant. These factories have been chosen because of their ability to produce the highest quality consistent with our standards.

Every piece of Gloster furniture is manufactured to our high standards by skilled furniture makers and each item is hand finished to guarantee years of service in demanding conditions.

TEAK & THE ENVIRONMENT

Teak trees are not indigenous to Indonesia but climatic conditions on Java are ideal for growing teak. Teak was originally introduced to the islands by Buddhist monks, some 700 years ago. When the Dutch colonized Indonesia in the 19th Century, they soon realized the opportunity to establish large plantations and introduced the sustainable plantation management systems that are still in use today.

continued on next page...



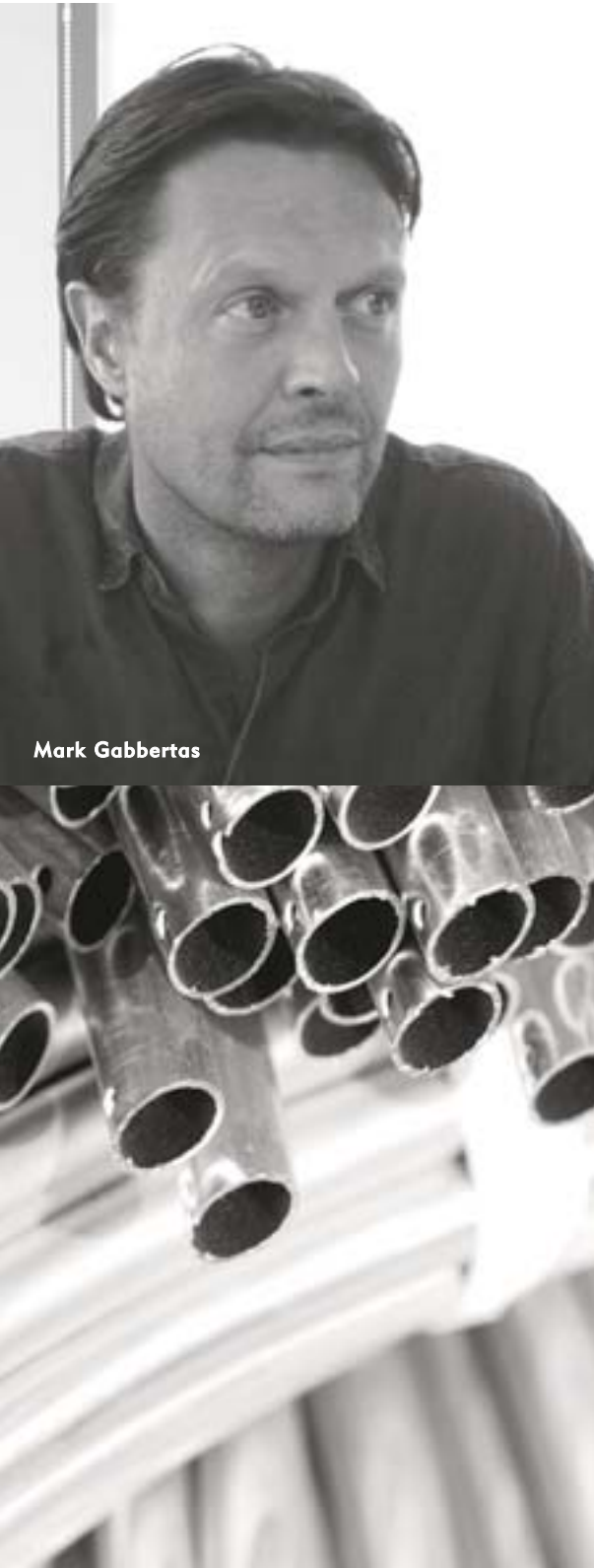




John Caldwell



Povl Eskildsen



Mark Gabbertas

Teak plantations are really no different than any other crop, except that the growing cycle is far longer. Within the plantations, the trees are continuously cared for by the local population and over their lifetime the trees are regularly pruned and the integrity of the plantations carefully maintained. This ultimately results in a better quality of timber - healthier wood, straighter grain and with less knots. Ideal for use in outdoor furniture.

We work continually with the managers of the government owned plantations and other interested parties to ensure that everything to do with our use of Teak is environmentally correct.

We take great care that all our manufacturing activities follow good environmental practices for the good of our people and of the local communities.

DESIGNERS

Of course, great manufacturing is wasted without great design. Gloster currently works with several world-renown designers to create timeless, elegant furniture.

John Caldwell

Grown by its namesake John Caldwell, the John Caldwell Design Company has successfully expanded in its own right from the first commercial design sold by John at the age of 19. Always interested in using the latest light-weight, durable, and easy to clean materials for his outdoor lines, John Caldwell has enjoyed and indeed currently enjoys a successful and long term relationship with Gloster.

John Caldwell's design approaches have varied widely to solve the needs of Gloster's increasingly complex design assignments. Currently working on designs which require highly tooled die cast, molded plastic components and fabricated wood and metal products, John Caldwell and his team continue to play an important part in Gloster's development.

Povl Eskildsen

Povl began gathering furniture design & production knowledge over two decades ago whilst working in his fathers furniture factory. Having furthered a significantly 'hands-on' early interest in furniture design with the appropriate education. Povl studied and graduated in furniture design from the School of Architecture in Aarhus, Denmark in 1986.

Since this time Povl has worked extensively, purely as a freelance designer. Continuously developing his talent and exhaustively pursuing new concepts within his own studio, Povl has worked with many international furniture factories culminating in a successful and productive relationship with Gloster.

Mark Gabbertas

Mark Gabbertas is an award winning furniture designer based in London. Having previously worked in advertising, he changed careers and trained to be a cabinetmaker over 15 years ago.

Mark has a fundamental understanding of manufacturing techniques and is enthused by the prospect of pushing the boundaries of these as far as possible. An intrinsic part of Marks design process is the belief that at all times, the design of an object is governed by an appreciation of the commercial realities that surround it. He believes passionately that if a great design does not sell, perhaps it is not such a great design. Marks flagship project with Gloster, Eclipse, only substantiates this concept.

TEAK

Teak is a dense, close-grained hardwood with a high natural oil content. Teak is exceptionally hard wearing, highly resistant to rotting and is almost impervious to the effects of sun, rain, frost or snow. For these reasons, teak is the first choice timber for outdoor furniture.

We control our manufacturing at every level - from hand selection of the finest grade of teak, through kiln drying to processing at our own factory. Kiln drying not only enables us to craft accurate, close fitting joints, but also ensures the stability of the finished furniture in all the climatic conditions it is likely to meet. Naturally, all teak we use is sourced from sustainable plantations.







VENTURA

323, 324, 325, 326, 220, 328







VENTURA

323, 324, 327, 272, 225



VENTURA

222, 220, 223, 270







VENTURA

383, 918



BELMONT

1800, 1801, 1831







SOLANA

1802, 1830, 1800, 1801, 1831, 1804, 342, 343



KINGSTON

685, 811







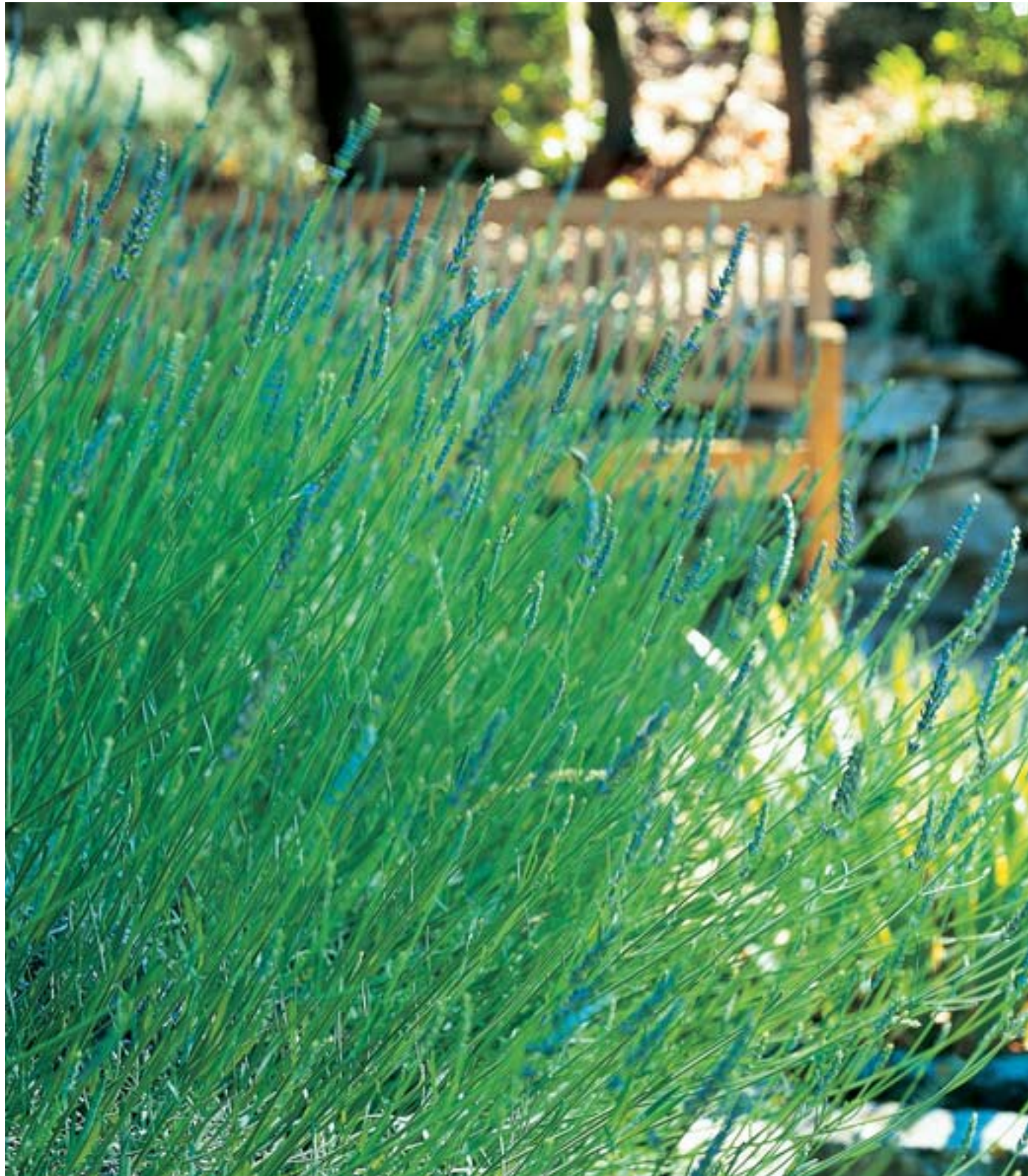
KINGSTON

1910, 271, 259



KINGSTON

964







ESTRADA

710, 711, 713, 715, 717, 349, 426



ESTRADA

710, 711, 713, 715, 717, 349, 426, 4271







FUSION

4591, 493



AXIS

347, 334







SQUARE

408, 405



ANASSA

761M, 735M, 736M, 738M, 737M, 7411M







HALIFAX

513, 517



ESTATE

512W, 517W, 514W, 526W







ESTATE

416W, 802W, 803W, 394W

OUTDOOR LOUNGE

Truly taking the indoors out, outdoor lounge is the ultimate expression of the outdoor living trend. The combination of innovative design and pioneering cushion technology mean outdoor lounge products can be left outside all year round and in all weathers without any need to cover or protect.

As with all the best ideas, simplicity is the key with highly modular seating units providing the building blocks for each collection. This simplicity allows a wide number of different units to integrate together to create almost limitless design possibilities.







CLOUD

606S, 607S, 609S, 608S, 60SM, 60LG, 6032, 6042, C87, C88







CLOUD

609S, 605S, 607S, 606S, 607S, 608S, 6043, 6031, 6041, 60SM, 60LG, C87, C88



CLOUD

605S, 606S, 608S, 60SM, 60LG, 6031, 6041, C87, C88





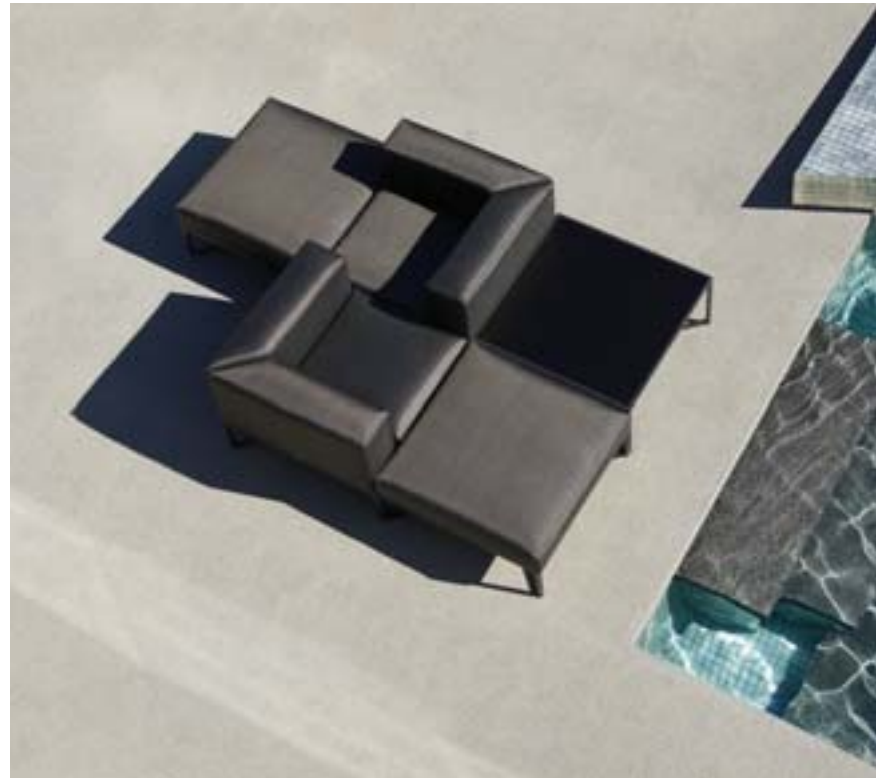
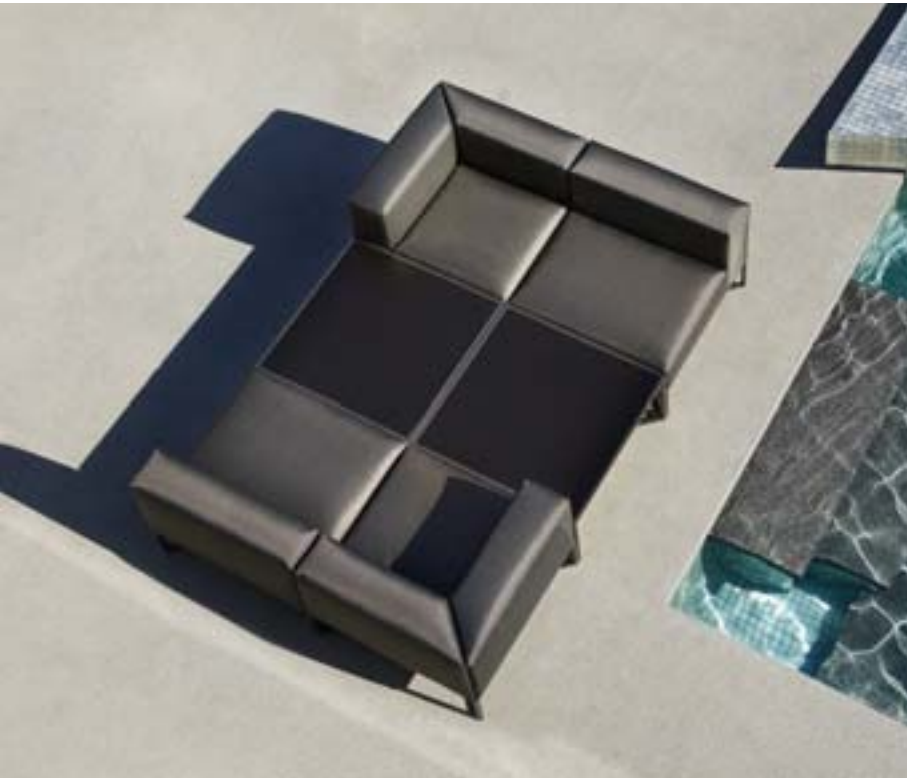


BLOC
4811, 4812



BLOC

4811, 4821, 4813, 4871







BLOC

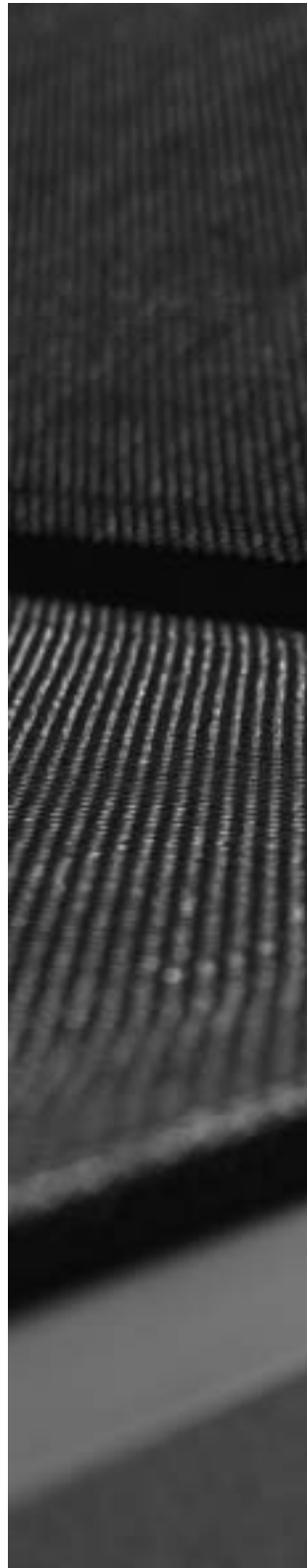
4811, 4812, 4813, 4881

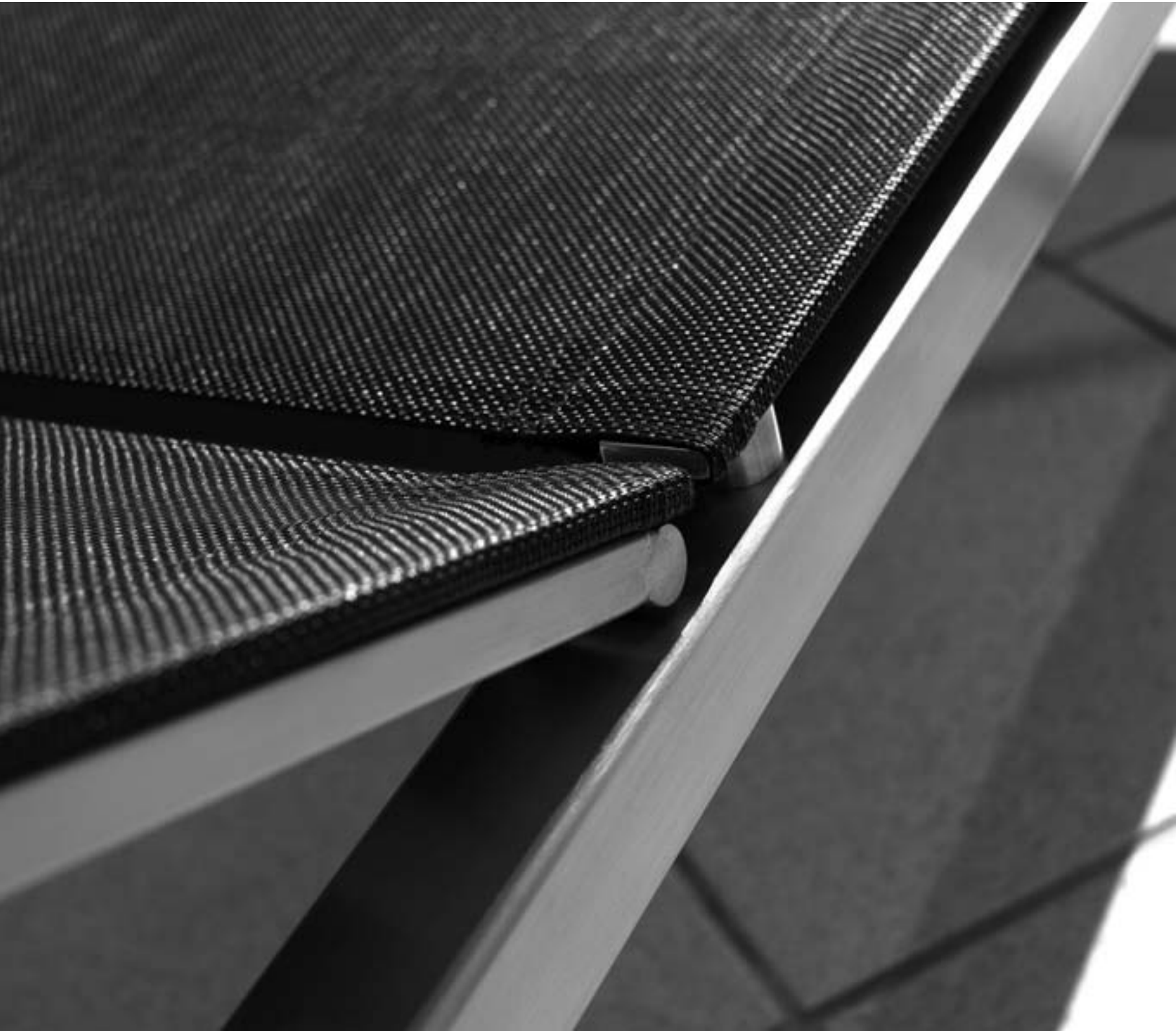
SLING

Sling furniture is the modern choice for those seeking practicality, style and comfort.

We use the highest quality Textilene® woven vinyl in the manufacture of our sling furniture. Textilene® is made by coating a high strength polyester yarn with a vinyl compound and the finished material is easy to clean and is resistant to fading, mildew and wear & tear under even the most severe weather conditions.

The main benefit of sling however, is comfort. When stretched taught between two side frames, sling provides a yielding and infinitely variable seating surface that molds to your individual body shape.

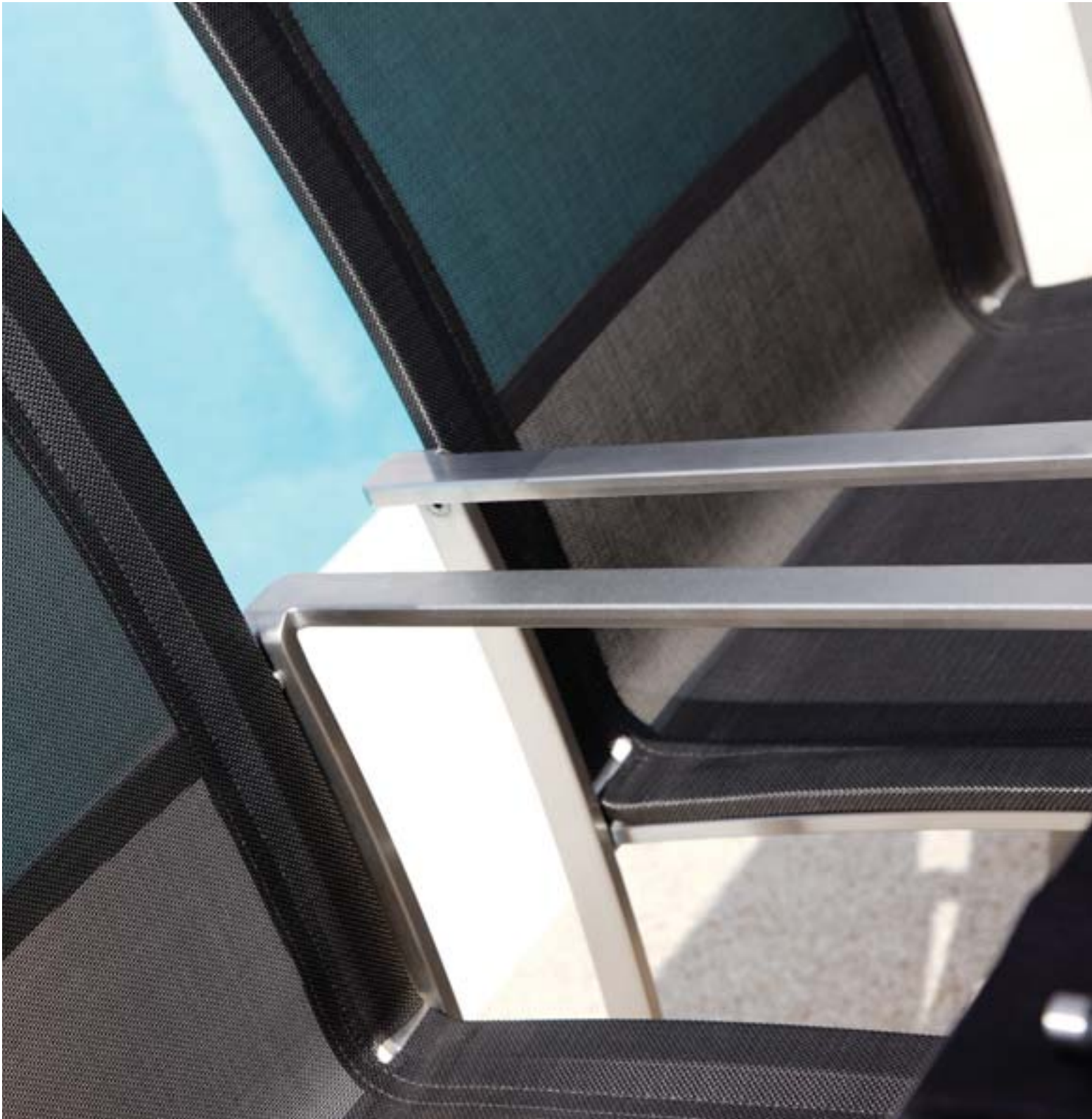






FUSION

4592, 550M







FUSION

558M, 548, 547M



VIGO

4591, 233C







VIGO
4561, 4661, 233C



AZORE

544SC, 546S, 539C, 5412S, 540SC







AZORE

540TM, 5424T, 544TM



LUNA

982GC, 983G



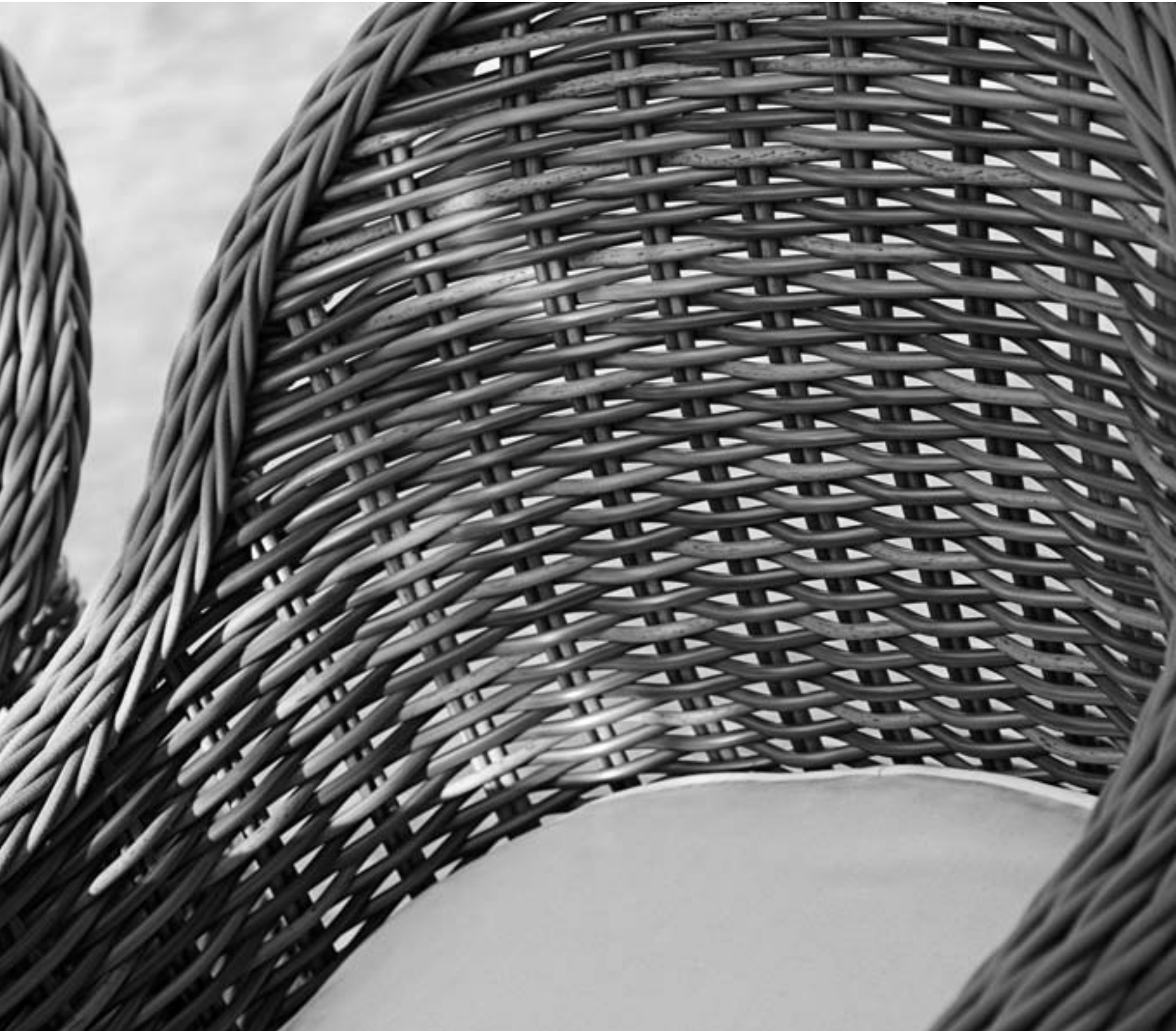
WOVEN

Woven furniture retains the classic style of traditional wicker pieces, but with the added benefit of complete weather resistance. In addition, because every piece is hand-woven, each item is completely unique - as individual as the person who wove it.

We weave over fully welded, powder coated aluminum frames, making the furniture both light and highly resistant to corrosion.

All our woven furniture is made from only the highest quality man-made fiber. Soft to the touch, this remarkable material has many benefits including high suppleness, tear resistance, UV resistance and weather resistance. The polyethylene based, extruded and through-dyed wicker is also completely weatherproof, insensitive to differences in temperature and extremely hard wearing.



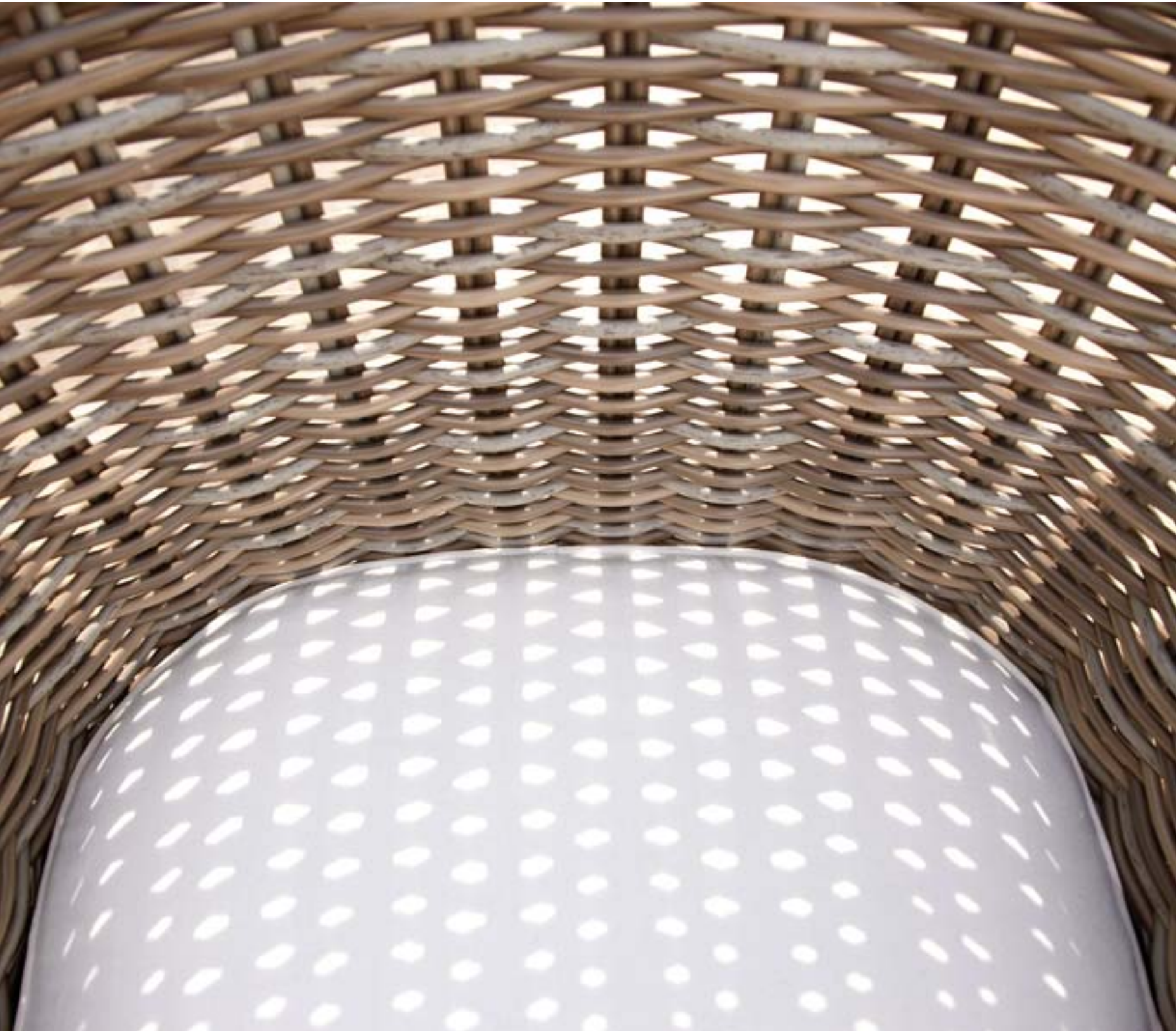




HAVANA

307S, 2671S







HAVANA

307W, 274



HAVANA

308W, 319W, 270







HAVANA

2610S, 318S, 2670S, 2641S, 2601S, 2602S



HAVANA MODULAR

440A, 442, 441, 441A, 444, 443







HAVANA MODULAR

442, 441, 440A, 441A, 444, 443



PLANTATION

580M, 582M, 588M, 584M, 590M, 594M, 583M, 585M, 586M, 587M, 591M







PLANTATION

988M, 990M, 364M



CASABLANCA

661, 662, 664, 663







HORIZON CLUB

692, 693, 696, 697



HORIZON

701, 703, 702, 697, 700







ECLIPSE

356D, 359D, 357CAN, 358D


SPECIFICATIONS

When choosing exactly the right outdoor furniture for your particular needs, function is just as important as style.

In the following section you will find full specifications for every product in the Gloster range, including dimensions, cushion applications and other useful information to help you plan your selections in detail.



Knowing exactly what furniture will fit where is not always simple. So, to assist with planning your outdoor space, Gloster has developed an interactive furniture planner, accessible on our website - www.gloster.com

 This symbol indicates page numbers where you can see lifestyle images of specific item in the front part of the brochure.

10 & 11







ANASSA



W	26.5"
D	30.5"
H	36.5"
SH	16"
AH	25.5"

Anassa
730S : Dining Chair with Arms
Teak frame with woven seat,
back & side panels.
Color - Saddle
Cushion - AWDC



W	22.5"
D	29"
H	36.5"
SH	16"

Anassa
731S : Dining Chair
Teak frame with woven seat & back.
Color - Saddle
Cushion - AWSC



D	59"
H	28"

Anassa
751S : 59" Round Table
(without parasol hole)
Teak base with slatted teak table top.
Color - Saddle
Seats - 4



D	49"
H	28"

Anassa
7441S : 49" Round Table
(without parasol hole)
Teak base with slatted teak table top.
Color - Saddle
Seats - 3



W	47.5"
L	88.5"
H	28"

Anassa
761S : 47.5" x 88.5" Table
(without parasol hole)
Teak base with slatted teak table top.
Color - Saddle
Seats - 8



W	29"
L	77"
H	34.5"
SH	16"
AH	21"

Anassa
734S : Relaxer
Teak frame with woven seat,
back & side panels.
Color - Saddle
Cushions - Required
See pages 146 to 157 for fabric options



Anassa
740S : Ottoman
Teak frame with woven seat.
Color - Saddle
Cushion - Required
See pages 146 to 157 for fabric options

W	26"
D	26.5"
H	14.5"



Anassa
732S : Armchair
Teak frame with woven seat,
back & side panels.
Color - Saddle
Cushions - Required
See pages 146 to 157 for fabric options

W	33.5"
D	38.5"
H	33.5"
SH	17.5"
AH	22.5"



Anassa
733S : 2-Seater Sofa
Teak frame with woven seat,
back & side panels.
Color - Saddle
Cushions - Required
See pages 146 to 157 for fabric options

W	58.5"
D	38.5"
H	33.5"
SH	17.5"
AH	22.5"



Anassa
743S : 3-Seater Sofa
Teak frame with woven seat,
back & side panels.
Color - Saddle
Cushions - Required
See pages 146 to 157 for fabric options

W	84.5"
D	38.5"
H	33.5"
SH	17.5"
AH	22.5"



Anassa
7421S : Round Side Table
Teak base with slatted teak table top.
Color - Saddle

D	22.5"
H	18"



Anassa
7411S : Round Conversation Table
(without parasol hole)
Teak base with slatted teak table top.
Color - Saddle

D	49"
H	20"



Anassa
7491S : Coffee Table
(without parasol hole)
Teak base with slatted teak table top.
Color - Saddle

W	30"
L	48"
H	18.5"



ANASSA



39



W 26.5"
D 30.5"
H 36.5"
SH 16"
AH 25.5"

Anassa
735M : Dining Chair with Arms
Teak frame with louvered teak back.
Woven seat.
Color - Mocha
Cushion - ALDC



39



W 22.5"
D 29"
H 36.5"
SH 16"

Anassa
736M : Dining Chair
Teak frame with louvered teak back.
Woven seat.
Color - Mocha
Cushion - ALSC



D 59"
H 28"

Anassa
751M : 59" Round Table
(without parasol hole)
Teak base with slatted teak table top.
Color - Mocha
Seats - 4



D 49"
H 28"

Anassa
7441M : 49" Round Table
(without parasol hole)
Teak base with slatted teak table top.
Color - Mocha
Seats - 3



39



W 47.5"
L 88.5"
H 28"

Anassa
761M : 47.5" x 88.5" Table
(without parasol hole)
Teak base with slatted teak table top.
Color - Mocha
Seats - 8



W 29"
L 77"
H 34.5"
SH 16"
AH 21"

Anassa
739M : Relaxer
Teak frame with louvered teak back.
Woven seat & side panels.
Color - Mocha
Cushions - Required
See pages 146 to 157 for fabric options

Important Note

Mocha finish items (especially table tops) require regular maintenance to maintain the satin finish. Please ensure you read the care & maintenance & repair instructions provided with your furniture.

We advise Anassa Mocha items are used under-cover (i.e. on a Veranda) in outdoor applications.



Anassa
740M : Ottoman
Teak frame with woven seat.
Color - Mocha
Cushion - Required
See pages 146 to 157 for fabric options

W	26"
D	26.5"
H	14.5"



Anassa
737M : Armchair
Teak frame with louvered teak back.
Woven seat & side panels.
Color - Mocha
Cushions - Required
See pages 146 to 157 for fabric options



38

W	33.5"
D	38.5"
H	33.5"
SH	17.5"
AH	22.5"



Anassa
738M : 2-Seater Sofa
Teak frame with louvered teak back.
Woven seat & side panels.
Color - Mocha
Cushions - Required
See pages 146 to 157 for fabric options



39

W	58.5"
D	38.5"
H	33.5"
SH	17.5"
AH	22.5"



Anassa
748M : 3-Seater Sofa
Teak frame with louvered teak back.
Woven seat & side panels.
Color - Mocha
Cushions - Required
See pages 146 to 157 for fabric options

W	84.5"
D	38.5"
H	33.5"
SH	17.5"
AH	22.5"



Anassa
7421M : Round Side Table
Teak base with slatted teak table top.
Color - Mocha

D	22.5"
H	18"



Anassa
7411M : Round Conversation Table
(without parasol hole)
Teak base with slatted teak table top.
Color - Mocha



38

D	49"
H	20"



Anassa
7491M : Coffee Table
(without parasol hole)
Teak base with slatted teak table top.
Color - Mocha

W	30"
L	48"
H	18.5"



HALIFAX



W 24.5"
D 27"
H 39"
SH 17"
AH 25"

Halifax
510 : Dining Chair with Arms
Solid teak construction.
Cushion - C510



W 21.5"
D 27"
H 39"
SH 17"

Halifax
511 : Dining Chair
Solid teak construction.
Cushion - C511



D 74.5"
H 29"

Halifax
522 : 74.5" Round Table
Teak base with slatted teak table top.
Seats - 6



D 54"
H 29"

Halifax
521 : 54" Round Table
Teak base with slatted teak table top.
Seats - 4



W 49"
L (min) 81.5"
L (max) 124.5"
H 29.5"

Halifax
524 : Large Extending Table
Teak base with slatted teak table top.
Extension leaves store under table top.
Seats - 8/12



W 40"
L (min) 76.5"
L (max) 111.5"
H 29.5"

Halifax
525 : Small Extending Table
Teak base with slatted teak table top.
Extension leaves store under table top.
Seats - 8/10



W 42"
L 77"
H 29"

Halifax
523 : 42" x 77" Table
Teak base with slatted teak table top.
Seats - 6



W 70.5"
D 27"
H 38"
SH 17"
AH 25"

Halifax
520 : Bench
Solid teak construction.
Cushion - C520



Halifax
514 : Ottoman
Solid teak construction.
Cushion - Required
See pages 146 to 157 for fabric options

W	24"
D	23.5"
H	17.5"



Halifax
512 : Deep Seating Lounge Chair
Teak frame with sling seat panel.
Cushions - Required
See pages 146 to 157 for fabric options

W	28.5"
D	37"
H	34.5"
SH	19.5"
AH	23.5"



Halifax
513 : Deep Seating Swivel
Rocker Lounge Chair
Teak frame with sling seat panel.
Cushions - Required
See pages 146 to 157 for fabric options

41

W	28.5"
D	34.5"
H	37.5"
SH	19.5"
AH	24"



Halifax
519 : Deep Seating Chaise
Teak frame with sling seat panel.
Back Positions - 5
Cushions - Required
See pages 146 to 157 for fabric options

W	30.5"
L	82.5"
H	39"
SH	18"
AH	23"



Halifax
515 : Deep Seating 2-Seater Sofa
Teak frame with sling seat panel.
Cushions - Required
See pages 146 to 157 for fabric options

W	53.5"
D	37"
H	34.5"
SH	19.5"
AH	23.5"



Halifax
516 : Deep Seating 3-Seater Sofa
Teak frame with sling seat panel.
Cushions - Required
See pages 146 to 157 for fabric options

W	78.5"
D	37"
H	34.5"
SH	19.5"
AH	23.5"



Halifax
517 : Round Conversation Table
Teak base with slatted teak table top.

41

D	46"
H	18"



Halifax
518 : Coffee Table
Teak base with slatted teak table top.

W	30.5"
L	50.5"
H	18"



Halifax
526 : Round Lamp Table
Teak base with slatted teak table top.

D	23"
H	20.5"



Halifax
527 : Square Lamp Table
Teak base with slatted teak table top.

W	23"
L	23"
H	20.5"

VENTURA



17



W 25"
D 26"
H 37"
SH 17"
AH 26"

Ventura
383 : Dining Chair with Arms
Solid teak construction.
Cushion - C28

W 18"
D 25"
H 37"
SH 17"



Ventura
395 : Dining Chair
Solid teak construction.
Cushion - C01



10, 14



W 31.5"
D 39"
H 36"
SH 18.5"
AH 22.5"

Ventura
224 : Deep Seating Rocking Chair
Teak frame with sling seat panel.
Cushions - Required
See pages 146 to 157 for fabric options

W 31.5"
D 35"
H 31.5"
SH 18.5"
AH 22.5"



Ventura
220 : Deep Seating Reclining Armchair
Teak frame with sling seat panel.
Back Positions - 3
Cushions - Required
See pages 146 to 157 for fabric options



14



W 23.5"
D 20.5"
H 17"

Ventura
223 : Deep Seating Ottoman
Solid teak construction.
Cushion - Required
See pages 146 to 157 for fabric options



14



W 79.5"
D 35"
H 31.5"
SH 18.5"
AH 22.5"

Ventura
222 : Deep Seating 3-Seater Sofa
Teak frame with sling seat panel.
Cushions - Required
See pages 146 to 157 for fabric options

W 56.5"
D 35"
H 31.5"
SH 18.5"
AH 22.5"



Ventura
221 : Deep Seating 2-Seater Sofa
Teak frame with sling seat panel.
Cushions - Required
See pages 146 to 157 for fabric options



12



W 31.5"
L 75"
H 36"
SH 18.5"
AH 22.5"

Ventura
225 : Deep Seating Chaise
Teak frame with sling seat panel.
Back Positions - 5
Cushion - Required
See pages 146 to 157 for fabric options



10

Ventura
328 : Sectional Deep Seating
Footstool
Solid teak construction.
Cushion - Required
See pages 146 to 157 for fabric options

W	26.5"
D	26.5"
H	18"



10, 13

Ventura
323 : Sectional Deep Seating
Left End Unit
Teak frame with sling seat panel.
Back Positions - 3
Cushion - Required
See pages 146 to 157 for fabric options

W	30"
D	35.5"
H	34.5"
SH	18.5"
AH	22.5"



10, 13

Ventura
324 : Sectional Deep Seating
Right End Unit
Teak frame with sling seat panel.
Back Positions - 3
Cushion - Required
See pages 146 to 157 for fabric options

W	30"
D	35.5"
H	34.5"
SH	18.5"
AH	22.5"



10

Ventura
325 : Sectional Deep Seating
Center Unit
Teak frame with sling seat panel.
Cushion - Required
See pages 146 to 157 for fabric options

W	26.5"
D	35.5"
H	34.5"
SH	18.5"



10

Ventura
326 : Sectional Deep Seating
Corner Unit
Teak frame with sling seat panel.
Cushion - Required
See pages 146 to 157 for fabric options

W	35.5"
D	35.5"
H	34.5"
SH	18.5"



13

Ventura
327 : Sectional Deep Seating
Wedge Unit
Teak frame with sling seat panel.
Cushion - Required
See pages 146 to 157 for fabric options

W	53"
D	35.5"
H	34.5"
SH	18.5"



KINGSTON



22



W	21.5"
D	24"
H	35.5"
SH	17.5"
AH	25.5"

Kingston
811 : Dining Chair with Arms
Solid teak construction.
Cushion - C74



W	17.5"
D	24"
H	35.5"
SH	17.5"

Kingston
812 : Dining Chair
Solid teak construction.
Cushion - C02



W	21"
D	23.5"
H	35.5"
SH	17.5"
AH	25.5"

Kingston
1902 : Stacking Chair with Arms
Solid teak construction.
Cushion - C1902



W	17"
D	22"
H	35.5"
SH	17.5"

Kingston
842 : Stacking Chair
Solid teak construction.
Cushion - C05



W	17.5"
D	21.5"
H	45.5"
SH	29.5"

Kingston
947 : Bar Chair
Solid teak construction.
Cushion - C05



W	17.5"
D	17.5"
H	29.5"

Kingston
948 : Bar Stool
Solid teak construction.
Cushion - Not Available



24

Kingston
259 : Rocking Chair
Solid teak construction.
Cushion - C24

W	24.5"
D	34"
H	43.5"
SH	17"
AH	25.5"



Kingston
963 : 4.5ft Bench
Solid teak construction.
Cushion - C16

W	52.5"
D	24.5"
H	35.5"
SH	17.5"
AH	25.5"



26

Kingston
964 : 5.5ft Bench
Solid teak construction.
Cushion - C18

W	65.5"
D	24.5"
H	35.5"
SH	17.5"
AH	25.5"



Kingston
1911 : Deep Seating Ottoman
Solid teak construction.
Cushion - Required
See pages 146 to 157 for fabric options

W	23.5"
D	21"
H	18.5"



Kingston
1910 : Deep Seating Armchair
Teak frame with sling seat panel.
Cushions - Required
See pages 146 to 157 for fabric options

W	30"
D	36.5"
H	34.5"
SH	20.5"
AH	24.5"



Kingston
1912 : Deep Seating 2-Seater Sofa
Teak frame with sling seat panel.
Cushions - Required
See pages 146 to 157 for fabric options

W	55"
D	36.5"
H	34.5"
SH	20.5"
AH	24.5"



Kingston
1913 : Deep Seating 3-Seater Sofa
Teak frame with sling seat panel.
Cushions - Required
See pages 146 to 157 for fabric options

W	81.5"
D	36.5"
H	34.5"
SH	20.5"
AH	24.5"

BELMONT / SOLANA



18, 21



W 22.5"
D 25"
H 35"
SH 17.5"
AH 24.5"

Belmont
1800 : Dining Chair with Arms
Solid teak construction.
Cushion - C1800



18, 21



W 17.5"
D 24.5"
H 35"
SH 17.5"

Belmont
1801 : Dining Chair
Solid teak construction.
Cushion - C1801



21



W 29.5"
L 75"
H 33"
SH 10.5"
AH 20"

Cleveland
342 : Stacking Lounger
Solid teak construction.
Back Positions - 6
Cushions - C342, C21
Accessories - 277A Arms



21



W 45"
L (min) 82"
L (max) 120"
H 29.5"

Belmont
1830 : Large Extending Table
Teak base with slatted teak table top.
Self-storing elevator extension leaves.
Seats - 8/12



18, 21



W 41"
L (min) 62"
L (max) 90"
H 29.5"

Belmont
1831 : Small Extending Table
Teak base with slatted teak table top.
Self-storing elevator extension leaves.
Seats - 6/10



20



W 21"
D 24.5"
H 34.5"
SH 17"
AH 26"

Solana
1804 : Folding Chair with Arms
Teak & brushed stainless steel frame with
sling seat & back. Folds flat.
Sling Color - Choice of 4 (See page 154)



W 18"
D 24.5"
H 34.5"
SH 17"

Solana
1805 : Folding Chair
Teak & brushed stainless steel frame with
sling seat & back. Folds flat.
Sling Color - Choice of 4 (See page 154)



20



W 29.5"
L 75"
H 33"
SH 10.5"
AH 20"

Cleveland
343 : Sling Stacking Lounger
Teak frame with sling seat & back.
Sling Color - Choice of 4 (See page 154)
Back Positions - 6
Accessories - 277A Arms



21



W 23.5"
D 24.5"
H 35"
SH 17.5"
AH 24.5"

Solana
1802 : Dining Chair with Arms
Teak frame with sling seat & back.
Sling Color - Choice of 4 (See page 154)



W 20"
D 24.5"
H 35"
SH 17.5"

Solana
1803 : Dining Chair
Teak frame with sling seat & back.
Sling Color - Choice of 4 (See page 154)



W 30.5"
L 80.5"
H 40"
SH 13"
AH 20"

Wimbledon
276 : Lounger
Teak frame with sling seat & back.
Sling Color - Choice of 4 (See page 154)
Back Positions - Infinite
Accessory - 276 Arms

TRADITIONAL



Traditional
202 : Weston High Back Folding Chair
Solid teak construction.
Folds Flat.
Cushion - C23

W	16"
D	24.5"
H	37.5"
SH	17"



Traditional
203 : Weston High Back Folding
Chair with Arms
Solid teak construction.
Folds Flat.
Cushion - C01

W	21.5"
D	24.5"
H	37.5"
SH	17"
AH	26"



Traditional
394 : Adirondack Side Table
Teak base with slatted teak table top.

D	17.5"
H	15.5"



Traditional
803 : Adirondack Footstool
Solid teak construction.
Cushion - Not Available

W	23"
D	21.5"
H	13"



Traditional
802 : Adirondack Seat
Solid teak construction.
Cushion - C12

W	30"
D	34"
H	35"
SH	13.5"
AH	23"



Traditional
831 : Madison 5ft Backless Bench
Solid teak construction.
Cushion - C831

W	59"
D	16.5"
H	17.5"



Traditional
909 : Madison 6ft Backless Bench
Solid teak construction.
Cushion - C25

W	69"
D	16.5"
H	17.5"

AXIS



34



W 22.5"
D 23"
H 34.5"
SH 17.5"
AH 27"

Axis
334 : Dining Chair with Arms
Solid teak construction.
Cushion - C334



W 22.5"
D 23"
H 34.5"
SH 17.5"
AH 27"

Axis
334S : Dining Chair with Arms
Solid mahogany construction.
Painted Finish - Sable
Cushion - C334



34



W 42"
L (min) 85.5"
L (max) 124"
H 29"

Axis
347 : Extending Table
(without parasol hole)
Teak base with slatted teak table top.
Extension leaves fold and store under
table top.
Seats - 8/12



W 40"
L 70"
H 29"

Axis
346 : 40" x 70" Table
(without parasol hole)
Teak frame with slatted teak table top.
Seats - 6



W 38.5"
L 78.5"
H 28.5"

Axis
3481 : 38.5" x 78.5" Table
(without parasol hole)
Mahogany base with smoked glass
table top.
Painted Finish - Sable
Seats - 8
348B - Base only option



W 27"
D 32.5"
H 30.5"
SH 14"
AH 23.5"

Axis
335 : Deep Seating Armchair
Solid teak construction.
Cushions - C335B & C335S
See pages 148 to 157 for fabric options



W 58"
D 32.5"
H 30.5"
SH 14"
AH 23.5"

Axis
337 : Deep Seating Sofa
Solid teak construction.
Cushions - C337B & C337S
See pages 148 to 157 for fabric options



W 27"
D 22"
H 16.5"
SH 13.5"

Axis
336 : Deep Seating Ottoman
Solid teak construction.
Cushion - C336
See pages 148 to 157 for fabric options



W 39"
D 39"
H 19.5"

Axis
338 : Conversation Table
Teak frame with slatted teak table top.



W 46.5"
D 28.5"
H 15.5"

Axis
339 : Coffee Table
Teak frame with slatted teak table top.



W 23"
D 23"
H 15.5"

Axis
340 : Side Table
Teak frame with slatted teak table top.



29, 30

Estrada
711 : Right End Unit
Solid teak construction.
Cushions - Required
See pages 146 to 157 for fabric options
Accessory - 715CR Base Cushion Cover

D 41.5"
L 61.5"
H 27"
SH 17.5"



29, 30

Estrada
710 : Left End Unit
Solid teak construction.
Cushions - Required
See pages 146 to 157 for fabric options
Accessory - 715CR Base Cushion Cover

D 41.5"
L 61.5"
H 27"
SH 17.5"



29, 30

Estrada
713 : L Shaped Corner Unit
Solid teak construction.
Cushions - Required
See pages 146 to 157 for fabric options
Accessory - 713CR Base Cushion Cover

D 61.5"
L 61.5"
H 27"
SH 17.5"



29, 30

Estrada
717 : Ottoman
Solid teak construction.
Cushion - Required
See pages 146 to 157 for fabric options
Accessory - 717CR Base Cushion Cover

D 33.5"
L 33.5"
H 17.5"



D 39"
L 52"
H 27"
SH 17.5"

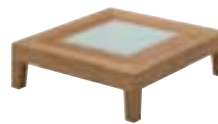
Estrada
714 : Wedge Corner Unit
Solid teak construction.
Cushions - Required
See pages 146 to 157 for fabric options
Accessory - 714CR Base Cushion Cover



29, 30

Estrada
715 : Extension Unit
Solid teak construction.
Cushions - Required
See pages 146 to 157 for fabric options
Accessory - 715CR Base Cushion Cover

D 41.5"
L 52"
H 27"
SH 17.5"



29, 30

Estrada
426 : Side Table
Teak frame with tempered glass table top.

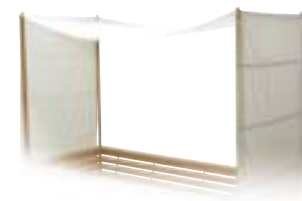
W 33.5"
L 33.5"
H 9.5"



29, 30

Estrada
349 : Conversation Table
Teak frame with tempered glass table top.

W 47"
L 47"
H 10"



31

Estrada
4271 / 4272 : Sail - Small / Large
100% acrylic fabric canopy. Teak poles
with stainless steel cappings. Stainless
steel fixing brackets.
Color - Canvas
Accessory - C86 Sail Storage Bag

D 45.5"
L 108.5"
H 84"
D 45.5"
L 128.5"
H 84"



SQUARE



37



W 83"
D 16"
H 17"

Square
405 : 82.5" Backless Bench
Solid teak construction.
Cushion - C405

W 51.5"
D 16"
H 17"



Square
429 : 51.5" Backless Bench
Solid teak construction.
Cushion - C429



37



W 45.5"
L 94.5"
H 29"

Square XL
408 : 45.5" x 94.5" Table
(without parasol hole)
Teak frame with slatted teak table top.
Seats - 8

W 36"
L 62"
H 29"



Square XL
407 : 36" x 62" Table
(without parasol hole)
Teak frame with slatted teak table top.
Seats - 6

W 36"
L 36"
H 29"



Square XL
406 : 36" x 36" Table
(without parasol hole)
Teak frame with slatted teak table top.
Seats - 4



43

Estate
514W : Halifax Ottoman
Solid mahogany construction.
Painted Finish - White
Cushion - Required
See pages 146 to 157 for fabric options

W	24"
D	23.5"
H	17.5"



42, 43

Estate
512W : Halifax Deep Seating
Lounge Chair
Solid mahogany construction.
Painted Finish - White
Cushions - Required
See pages 146 to 157 for fabric options

W	28.5"
D	37"
H	34.5"
SH	19.5"
AH	23.5"



Estate
520W : Halifax Bench
Solid mahogany construction.
Painted Finish - White
Cushion - C520

W	70.5"
D	27"
H	38"
SH	17"
AH	25"



43

Estate
526W : Halifax Round Lamp Table
Mahogany base with slatted
mahogany table top.
Painted Finish - White

D	23"
H	20.5"



42

Estate
517W : Halifax Round Conversation Table
Mahogany base with slatted
mahogany table top.
Painted Finish - White

D	46"
H	18"



44

Estate
394W : Adirondack Side Table
Mahogany base with slatted
mahogany table top.
Painted Finish - White

D	17.5"
H	15.5"



44

Estate
803W : Adirondack Footstool
Solid mahogany construction.
Painted Finish - White
Cushion - Not Available

W	23"
D	21.5"
H	13"



44

Estate
802W : Adirondack Seat
Solid mahogany construction.
Painted Finish - White
Cushion - C12

W	30"
D	34"
H	35"
SH	13.5"
AH	23"



45

Estate
416W : Marlborough 78" Bench
Solid mahogany construction.
Painted Finish - White
Cushion - C19

W	78"
D	22"
H	41.5"
SH	19"
AH	30.5"

Important Note

Estate items are manufactured using kiln dried mahogany timber and are hand painted with multiple coats of marine grade paints to give a hard wearing and durable outdoor finish. Because Estate items are painted it is possible that the surface can be scratched through ordinary wear and tear or by contact with sharp or abrasive materials. Additionally over time the high gloss finish may dull dependent upon its exposure to UV and rain. Scratches can be touched-up and the whole product can be repainted if required.

All Estate items are designed for full outdoor use but in the knowledge they will behave outdoors as all painted wood furniture or joinery would do. Please ensure you read the care and maintenance and the repair instructions provided with your furniture.



BRISTOL



D 38.5"
H 39.5"

Bristol
966 : 38.5" Round Bar Table
Teak base with slatted teak table top.
Seats - 4



D 28.5"
H 28"

Bristol
922 : 28.5" Round Table
Teak base with slatted teak table top
(without parasol hole).
Seats - 3



D 47.5"
H 28"

Bristol
925 : 47.5" Round Table
Teak base with slatted teak table top.
Seats - 4



D 53.5"
H 28"

Bristol
926 : 53.5" Round Table
Teak base with slatted teak table top.
Seats - 5



D 70"
H 28"

Bristol
204 : 70" Round Table
Teak base with slatted teak table top.
Seats - 7



W 45.5"
L 51"
H 28.5"

Bristol
398 : Rectangular Gateleg Table
Teak frame with slatted teak table top.
Seats - 6



W 45.5"
L 51"
H 28.5"

Bristol
397 : Round Gateleg Table
Teak frame with slatted teak table top.
Seats - 4



Bristol
385 : 63" Square Table
Teak base with slatted teak table top.
Seats - 8

W	63"
L	63"
H	28"



Bristol
918 : 43" x 77" Table
Teak base with slatted teak table top.
Seats - 8

W	43"
L	77"
H	28"



17



Bristol
683 : Large Extending Table
Teak base with slatted teak table top.
Extension leaves store under table top.
Seats - 8/12

W	43.5"
L (min)	81.5"
L (max)	121.5"
H	28"



Bristol
684 : Small Oval Extending Table
Teak base with slatted teak table top.
Extension leaves store under table top.
Seats - 6/8

W	35"
L (min)	67"
L (max)	95.5"
H	28"



Bristol
685 : Large Oval Extending Table
Teak base with slatted teak table top.
Extension leaves store under table top.
Seats - 8/12

W	38.5"
L (min)	80.5"
L (max)	114"
H	28"



22



Bristol
917 : Large Round Extending Table
Teak base with slatted teak table top.
Extension leaves store under table top.
Seats - 8/10

W	59"
L (min)	59"
L (max)	79.5"
H	28"



ACCESSORIES



W 23"
D 23"
H 19"

Accessory
268 : Large Side Table
Teak frame with slatted teak table top.



W 16.5"
D 21.5"
H 15.5"

Accessory
267 : Medium Side Table
Teak frame with slatted teak table top.



W 23"
D 23"
H 21"

Accessory
774 : 23" Square Lamp Table
Teak frame with slatted teak table top.

13



D 40.5"
H 19"

Accessory
272 : Small Round Conversation Table
Teak frame with slatted teak table top.
Accepts PB10 or PB11 Parasol Base only.

81



D 27"
H 19"

Accessory
274 : Large Round Side Table
Teak frame with slatted teak table top.



D 19.5"
H 15.5"

Accessory
273 : Small Round Side Table
Teak frame with slatted teak table top.

D 40.5"
H 24"



Accessory
729 : Round Chat Table
Teak frame with slatted teak table top.
Accepts PB10 or PB11 Parasol Base only.

D 23"
H 21"



Accessory
773 : Round Lamp Table
Teak frame with slatted teak table top.

25



W 40.5"
D 40.5"
H 19"

Accessory
271 : Square Conversation Table
Teak frame with slatted teak table top.
Accepts PB10 or PB11 Parasol Base only.

14, 83



W 25.5"
D 51.5"
H 19"

Accessory
270 : Coffee Table
Teak frame with slatted teak table top.

ACCESSORIES



Accessory
967 : Nest of Side Tables
Teak frame with slatted teak table tops.
Small Table - W12.5" x D16.5" x H15.5"
Medium Table - W16" x D18" x H17"
Large Table - W19.5" x D19.5" x H19"

W	19.5"
D	19.5"
H	19"



Accessory
946 : Console Table
Teak frame with slatted teak table top.

W	53"
D	18"
H	30.5"



Accessory
229 : Ice Box
Teak & stainless steel construction with fully insulated nylon liner. Lockable lid. Storage Capacity - 36 gallons

W	36"
D	25.5"
H	28"



Accessory
344 : Cushion / Storage Chest
Teak construction with removable base shelf. Lockable lid.

W	54.5"
D	29.5"
H	31"



Accessory
228 : Sideboard Storage / Cushion Unit
Teak & stainless steel construction with adjustable internal shelf & lockable doors.

W	63"
D	30.5"
H	37"



Accessory
815 : 17" Square Planter
Solid teak construction.

W	17"
D	17"
H	17"



Accessory
816 : 19.5" Square Planter
Solid teak construction.

W	19.5"
D	19.5"
H	19.5"



Accessory
818 : 21" x 40" Box Planter
Solid teak construction.

W	40"
D	21"
H	21"



CLOUD



50, 51, 52



W 30"
D 35"
H 30.5"
SH 17"

Cloud
30" x 30" Center Unit
EP stainless steel frame with fully upholstered outdoor cushions.
Comprised of :
605S 30" x 30" Base w/Seat Cushion x1
60SM 30" Arm / Back Cushion x1



52



W 35"
D 35"
H 30.5"
SH 17"

Cloud
30" x 30" Corner Unit
EP stainless steel frame with fully upholstered outdoor cushions.
Comprised of :
605S 30" x 30" Base w/Seat Cushion x1
60SM 30" Arm / Back Cushion x2



53



W 40"
D 35"
H 30.5"
SH 17"

Cloud
30" x 30" Lounge Chair
EP stainless steel frame with fully upholstered outdoor cushions.
Comprised of :
605S 30" x 30" Base w/Seat Cushion x1
60SM 30" Arm / Back Cushion x3



50, 52



W 40"
D 35"
H 30.5"
SH 17"

Cloud
30" x 40" Center Unit
EP stainless steel frame with fully upholstered outdoor cushions.
Comprised of :
606S 30" x 40" Base w/Seat Cushion x1
60LG 40" Arm / Back Cushion x1



50, 52



W 45"
D 35"
H 30.5"
SH 17"

Cloud
30" x 40" Right End Unit
EP stainless steel frame with fully upholstered outdoor cushions.
Comprised of :
606S 30" x 40" Base w/Seat Cushion x1
60LG 40" Arm / Back Cushion x1
60SM 30" Arm / Back Cushion x1



48, 50, 51



W 45"
D 35"
H 30.5"
SH 17"

Cloud
30" x 40" Left End Unit
EP stainless steel frame with fully upholstered outdoor cushions.
Comprised of :
606S 30" x 40" Base w/Seat Cushion x1
60LG 40" Arm / Back Cushion x1
60SM 30" Arm / Back Cushion x1



48, 50



W 60"
D 35"
H 30.5"
SH 17"

Cloud
30" x 60" Center Unit
EP stainless steel frame with fully upholstered outdoor cushions.
Comprised of :
607S 30" x 60" Base w/Seat Cushion x1
60SM 30" Arm / Back Cushion x2



W 65"
D 35"
H 30.5"
SH 17"

Cloud
30" x 60" Right End Unit
EP stainless steel frame with fully upholstered outdoor cushions.
Comprised of :
607S 30" x 60" Base w/Seat Cushion x1
60SM 30" Arm / Back Cushion x3



51



W 65"
D 35"
H 30.5"
SH 17"

Cloud
30" x 60" Left End Unit
EP stainless steel frame with fully upholstered outdoor cushions.
Comprised of :
607S 30" x 60" Base w/Seat Cushion x1
60SM 30" Arm / Back Cushion x3



53



W 30"
D 30"
H 17"

Cloud
30" x 30" Ottoman
EP stainless steel frame with fully upholstered outdoor cushions.
Comprised of :
605S 30" x 30" Base w/Seat Cushion x1



W 40"
D 30"
H 17"

Cloud
30" x 40" Ottoman
EP stainless steel frame with fully upholstered outdoor cushions.
Comprised of :
606S 30" x 40" Base w/Seat Cushion x1



50, 51



W 60"
D 30"
H 17"

Cloud
30" x 60" Ottoman
EP stainless steel frame with fully upholstered outdoor cushions.
Comprised of :
607S 30" x 60" Base w/Seat Cushion x1

CLOUD



Cloud
40" x 60" Sofa
EP stainless steel frame with fully upholstered outdoor cushions.
Comprised of :
609S 40" x 60" Base w/Seat Cushion x1
60LG 40" Arm / Back Cushion x2
60SM 30" Arm / Back Cushion x2

W 70"
D 45"
H 30.5"
SH 17"



Cloud
40" x 40" Corner Unit
EP stainless steel frame with fully upholstered outdoor cushions.
Comprised of :
608S 40" x 40" Base w/Seat Cushion x1
60LG 40" Arm / Back Cushion x2

W 45"
D 45"
H 30.5"
SH 17"



Cloud
40" x 40" Center Unit
EP stainless steel frame with fully upholstered outdoor cushions.
Comprised of :
608S 40" x 40" Base w/Seat Cushion x1
60LG 40" Arm / Back Cushion x1

48, 50, 52

W 40"
D 45"
H 30.5"
SH 17"



Cloud
40" x 60" Right End Unit
EP stainless steel frame with fully upholstered outdoor cushions.
Comprised of :
609S 40" x 60" Base w/Seat Cushion x1
60LG 40" Arm / Back Cushion x1
60SM 30" Arm / Back Cushion x2

W 65"
D 45"
H 30.5"
SH 17"

48



Cloud
40" x 60" Left End Unit
EP stainless steel frame with fully upholstered outdoor cushions.
Comprised of :
609S 40" x 60" Base w/Seat Cushion x1
60LG 40" Arm / Back Cushion x1
60SM 30" Arm / Back Cushion x2

W 65"
D 45"
H 30.5"
SH 17"

48



Cloud
40" x 60" Center Unit
EP stainless steel frame with fully upholstered outdoor cushions.
Comprised of :
609S 40" x 60" Base w/Seat Cushion x1
60SM 30" Arm / Back Cushion x2

W 60"
D 45"
H 30.5"
SH 17"



Cloud
40" x 60" Right End Unit - Half Arm
EP stainless steel frame with fully upholstered outdoor cushions.
Comprised of :
609S 40" x 60" Base w/Seat Cushion x1
60LG 40" Arm / Back Cushion x2

W 65"
D 45"
H 30.5"
SH 17"



Cloud
40" x 60" Left End Unit - Half Arm
EP stainless steel frame with fully upholstered outdoor cushions.
Comprised of :
609S 40" x 60" Base w/Seat Cushion x1
60LG 40" Arm / Back Cushion x2

W 65"
D 45"
H 30.5"
SH 17"

51



Cloud
40" x 40" Ottoman
EP stainless steel frame with fully upholstered outdoor cushions.
Comprised of :
608S 40" x 40" Base w/Seat Cushion x1

W 40"
D 40"
H 17"



Cloud
C87 : 13" x 20" Throw Pillow
See pages 146 to 157 for fabric options

W 13"
D 20"
T 7"



Cloud
C88 : 16" x 24" Throw Pillow
See pages 146 to 157 for fabric options

W 16"
D 24"
T 8"




Cloud
6131 : 30" x 80" Lounger
EP stainless steel frame with fully upholstered outdoor cushions.
Cushion - Included
Back Positions - 4


W 30"
L 80"
H 34"
SH 14"



CLOUD




51, 52, 53




W	30"
L	30"
H	11.5"

Cloud
6031 : 30" x 30" Coffee Table
(Teak Top)
EP stainless steel frame with slatted teak table top.




48



W	30"
L	30"
H	11.5"

Cloud
6032 / 6033 / 6034 :
30" x 30" Coffee Table (Quartz Top)
Brushed EP stainless steel frame with quartz table top.



W	30"
L1	30"
L2	48"
H1	16"
H2	24"

Cloud
6061 : 30" x 30" Dual Height
Coffee Table (HPL Top)
Brushed EP stainless steel frame with HPL table top. Upper table top surfaces fold up & out to dining height.
Accessory - 6161B HPL Base Shelf




51, 52




W	40"
L	40"
H	11.5"

Cloud
6041 : 40" x 40" Coffee Table
(Teak Top)
EP stainless steel frame with slatted teak table top.




48, 50



W	40"
L	40"
H	11.5"

Cloud
6042 / 6043 / 6044 :
40" x 40" Coffee Table (Quartz Top)
Brushed EP stainless steel frame with quartz table top.



W	40"
L1	40"
L2	58"
H1	16"
H2	24"

Cloud
6151 : 40" x 40" Dual Height
Coffee Table (HPL Top)
Brushed EP stainless steel frame with HPL table top. Upper table top surfaces fold up & out to dining height.
Accessory - 6151B HPL Base Shelf

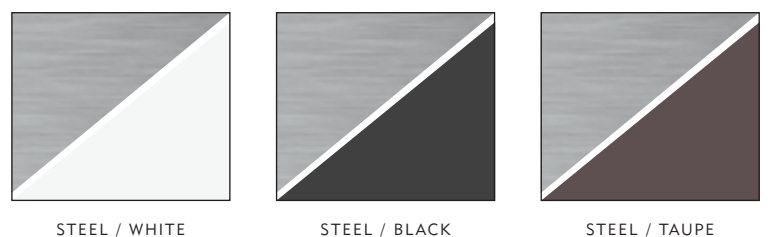
CLOUD SEATING UNITS COLOR OPTIONS
Cloud seating units feature EP (electropolished) stainless steel frames with a choice of Ivory, Onyx or Taupe color outdoor lounge fabrics.



CLOUD QUARTZ COFFEE TABLE COLORS
Cloud quartz coffee tables feature EP (electropolished) stainless steel frames with a choice of Ivory, Onyx or Taupe color quartz table tops.



CLOUD HPL COFFEE TABLE COLORS
Cloud HPL coffee tables feature EP (electropolished) stainless steel frames with a choice of White, Black or Taupe color HPL table tops.





56, 59

Bloc
4813 : Ottoman
Powder coated aluminum frame with fully upholstered outdoor cushion.

W	35.5"
D	35.5"
H	16.5"



55, 56, 58

Bloc
4812 : Center Unit
Powder coated aluminum frame with fully upholstered outdoor cushions.

W	35.5"
D	35.5"
H	28"
SH	16.5"



55, 56, 58

Bloc
4811 : Corner / End Unit
Powder coated aluminum frame with fully upholstered outdoor cushions.

W	35.5"
D	35.5"
H	28"
SH	16.5"



58

Bloc
4881 : Low Coffee Table
Powder coated aluminum frame with HPL table top.

W	35.5"
L	35.5"
H	10.5"



56, 57

Bloc
4871 : High Coffee Table
Powder coated aluminum frame with HPL table top.
Accessory - 487FST Pair of fasteners to connect high coffee table to seating units

W	35.5"
L	35.5"
H	16.5"

BLOC COLOR OPTIONS

Bloc is also available in two contrasting color ways. The dark color way comprises Cinder color powder coated frames with Mercury fabric and Black HPL table tops. The light color way comprises White color powder coated frames with Ivory fabric and White HPL table tops.



CINDER / MERCURY



WHITE / IVORY



AZORE



73



W	24.5"
D	24.5"
H	35.5"
SH	17.5"
AH	25.5"

Azore
 540TM : Stacking Chair with Arms
 Powder coated aluminum frame with sling seat & back.
 Frame Color - Tungsten
 Sling Color - Mercury



W	34"
L	34"
H	29"

Azore
 5412T : 34" Square Table
 Powder coated aluminum frame with satin finish glass table top (without parasol hole).
 Frame Color - Tungsten
 Seats - 4



W	34"
L	34"
H	29"

Azore
 5413T : 34" Square Table
 Powder coated aluminum frame with slatted teak table top (without parasol hole).
 Frame Color - Tungsten
 Seats - 4



W	34"
L	34"
H	29"

Azore
 5414T : 34" Square Table
 Powder coated aluminum frame with HPL table top (without parasol hole).
 Frame Color - Tungsten
 Seats - 4



W	34"
L	63"
H	29"

Azore
 5422T : 34" x 63" Table
 Powder coated aluminum frame with satin finish glass table top (without parasol hole).
 Frame Color - Tungsten
 Seats - 6



W	34"
L	63"
H	29"

Azore
 5423T : 34" x 63" Table
 Powder coated aluminum frame with slatted teak table top (without parasol hole).
 Frame Color - Tungsten
 Seats - 6



73



W	34"
L	63"
H	29"

Azore
 5424T : 34" x 63" Table
 Powder coated aluminum frame with HPL table top (without parasol hole).
 Frame Color - Tungsten
 Seats - 6



72



W	31"
L	80.5"
H	38.5"
SH	13"
AH	19.5"

Azore
 544TM : Lounger
 Powder coated aluminum frame with sling seat & back.
 Frame Color - Tungsten
 Sling Color - Mercury
 Back Positions - 4
 Accessories - 546T Arms
 539M Sling Shelf, 578T Wheels



W	15.5"
L	15.5"
H	16.5"

Azore
 5452T : Side Table
 Powder coated aluminum frame with satin finish glass table top.
 Frame Color - Tungsten



71

Azore
540SC : Stacking Chair with Arms
Powder coated aluminum frame with
sling seat & back.
Frame Color - Slate
Sling Color - Charcoal

W	24.5"
D	24.5"
H	35.5"
SH	17.5"
AH	25.5"



Azore
5414S : 34" Square Table
Powder coated aluminum frame with
HPL table top
(without parasol hole).
Frame Color - Slate
Seats - 4

W	34"
L	34"
H	29"



Azore
5413S : 34" Square Table
Powder coated aluminum frame with
slatted teak table top
(without parasol hole).
Frame Color - Slate
Seats - 4

W	34"
L	34"
H	29"



Azore
5412S : 34" Square Table
Powder coated aluminum frame with
satin finish glass table top
(without parasol hole).
Frame Color - Slate
Seats - 4

W	34"
L	34"
H	29"



Azore
5424S : 34" x 63" Table
Powder coated aluminum frame with
HPL table top
(without parasol hole).
Frame Color - Slate
Seats - 6

W	34"
L	63"
H	29"



Azore
5423S : 34" x 63" Table
Powder coated aluminum frame with
slatted teak table top
(without parasol hole).
Frame Color - Slate
Seats - 6

W	34"
L	63"
H	29"



Azore
5422S : 34" x 63" Table
Powder coated aluminum frame with
satin finish glass table top
(without parasol hole).
Frame Color - Slate
Seats - 6

W	34"
L	63"
H	29"



Azore
5452S : Side Table
Powder coated aluminum frame with
satin finish glass table top.
Frame Color - Slate

W	15.5"
L	15.5"
H	16.5"



70

Azore
544SC : Lounger
Powder coated aluminum frame with
sling seat & back.
Frame Color - Slate / Sling Color - Charcoal
Back Positions - 4
Accessories - 546S Arms
539C Sling Shelf, 578S Wheels

W	31"
L	80.5"
H	38.5"
SH	13"
AH	19.5"

LUNA



75



W 21.5"
D 23.5"
H 33.5"
SH 17"
AH 25"

Luna

982GC : Stacking Chair with Arms
Powder coated aluminum frame with sling seat & back. Teak arms.
Frame Color - Graphite
Sling Color - Charcoal



75



W 34"
L 63"
H 29.5"

Luna

983G : 34" x 63" Table
Powder coated aluminum frame with slatted teak table top (without parasol hole).
Frame Color - Graphite
Seats - 6

W 34"
L 34"
H 29.5"



Luna

7261G : 34" Square Table
Powder coated aluminum frame with slatted teak table top (without parasol hole).
Frame Color - Graphite
Seats - 4

W 31"
L 82"
H 39.5"
SH 13.5"
AH 20.5"



Luna

391GC : Lounger
Powder coated aluminum frame with sling seat & back. Teak arms.
Frame Color - Graphite
Sling Color - Charcoal
Back Positions - 6

W 18"
L 18"
H 18"



Luna

446G : Side Table
Powder coated aluminum frame with slatted teak table top (without parasol hole).
Frame Color - Graphite



Fusion
495M : Sling Folding Chair with Arms
EP stainless steel frame with sling seat & back. Folds Flat.
Sling Color - Mercury

W	20"
D	22"
H	32.5"
SH	18.5"
AH	25"



Fusion
551M : Stacking Chair
Brushed stainless steel frame with sling seat & back.
Sling Color - Mercury

W	19"
D	22"
H	34.5"
SH	17.5"



Fusion
550M : Stacking Chair with Arms
Brushed stainless steel frame with sling seat & back.
Sling Color - Mercury



62

W	21.5"
D	22.5"
H	34.5"
SH	18.5"
AH	25"



Fusion
494 : Teak Stacking Chair
Brushed stainless steel frame with slatted teak seat & back.

W	19"
D	23.5"
H	32"
SH	17"



Fusion
493 : Teak Stacking Chair with Arms
Brushed stainless steel frame with slatted teak seat, back & teak arms.



33

W	21"
D	23.5"
H	32"
SH	17"
AH	25"

Important Note

Brushed stainless steel is highly likely to develop some surface discoloration when exposed to a harsh environment such as the salt laden air found at most coastal properties. Any stainless steel furniture situated in a coastal environment will require regular cleaning of the stainless steel to preserve the surface finish.



Fusion
558M : Lounger
Brushed stainless steel frame with sling seat & back.
Sling Color - Mercury
Back Positions - 4
Accessories - 548 Arms
547M Sling Shelf



65

W	27"
L	82"
H	38.5"
SH	13.5"
AH	17.5"

NEXUS / GENEVA / VIGO



W 21.5"
D 23"
H 35"
SH 17.5"
AH 25.5"

Nexus
971 : Stacking Chair with Arms
Brushed stainless steel frame with slatted teak seat, back & teak arms.
Cushion - C07



W 18.5"
D 18.5"
H 17.5"

Nexus
994 : Side Table (Teak Top)
Brushed stainless steel frame with slatted teak table top.



W 21.5"
D 23.5"
H 33.5"
SH 17.5"
AH 25"

Geneva
368J : Stacking Chair with Arms
Brushed stainless steel frame with woven seat & back. Teak arms.
Weave Color - Java
Cushion - C07



W 19"
D 23"
H 33.5"
SH 17.5"

Geneva
369J : Stacking Chair
Brushed stainless steel frame with woven seat & back.
Weave Color - Java
Cushion - C07

Important Note

Brushed stainless steel is highly likely to develop some surface discoloration when exposed to a harsh environment such as the salt laden air found at most coastal properties. Any stainless steel furniture situated in a coastal environment will require regular cleaning of the stainless steel to preserve the surface finish.



67, 68, 69



W 21"
D 24.5"
H 35"
SH 17.5"
AH 25"

Vigo
233C : Stacking Chair with Arms
Brushed stainless steel frame with sling seat & back. Teak arms.
Sling Color - Charcoal



W 18.5"
D 24"
H 34.5"
SH 17.5"

Vigo
232C : Stacking Chair
Brushed stainless steel frame with sling seat & back.
Sling Color - Charcoal



W 25"
L 84.5"
H 40.5"
SH 13"

Vigo
289C : Lounger
Brushed stainless steel frame with sling seat & back.
Sling Color - Charcoal
Back Positions - Infinite



Kore
467 : 23" x 31" Folding Table
(without parasol hole)
EP stainless steel frame with slatted teak table top. Folds flat.
Seats - 2

W	23"
D	31"
H	28.5"



Kore
4571 : 31.5" Square Table
Brushed stainless steel frame with slatted teak table top (without parasol hole).
Seats - 4

W	31.5"
D	31.5"
H	29"



Kore
4591 : 43.5" x 81" Table
Brushed stainless steel frame with slatted teak table top (without parasol hole).
Seats - 8

33, 67	

W	43.5"
D	81"
H	29"



Kore
4662 : 58.5" Round Table
Brushed stainless steel frame with satin finish Slate color tempered glass table top (without parasol hole) and integral lazy susan.
Seats - 6

D	58.5"
H	28.5"



Kore
4661 : 58.5" Round Table
Brushed stainless steel frame with slatted teak table top (without parasol hole) and integral lazy susan.
Seats - 6

68	

D	58.5"
H	28.5"

Important Note
Brushed stainless steel is highly likely to develop some surface discoloration when exposed to a harsh environment such as the salt laden air found at most coastal properties. Any stainless steel furniture situated in a coastal environment will require regular cleaning of the stainless steel to preserve the surface finish.



Kore
4551 : Small Extending Table
Brushed stainless steel frame with slatted teak table top (without parasol hole).
Extension leaves fold under table top.
Seats - 6/8

W	38.5"
L (min)	63.5"
L (max)	102"
H	29.5"



Kore
4552 : Small Extending Table
Brushed stainless steel frame with satin finish Slate color tempered glass table top (without parasol hole).
Extension leaves fold under table top.
Seats - 6/8

W	38.5"
L (min)	63.5"
L (max)	105"
H	29"



Kore
4592 : 43.5" x 81" Table
Brushed stainless steel frame with satin finish Slate color tempered glass table top (without parasol hole).
Seats - 8

62	

W	43.5"
L	81"
H	29"



Kore
4561 : Large Extending Table
Brushed stainless steel frame with slatted teak table top (without parasol hole).
Extension leaves fold under table top.
Seats - 8/12

69	

W	43.5"
L (min)	81.5"
L (max)	125"
H	29.5"



HAVANA



82



W	25"
D	27"
H	32.5"
SH	17.5"
AH	25.5"

Havana
 2600 : Large Dining Chair with Arms
 Woven all-weather wicker over powder coated aluminum frame.
 Weave Colors - Willow or Sienna
 Cushion - C2600



84



W	63"
D	22.5"
H	33.5"
SH	17.5"

Havana
 2601 : Curved Dining Bench
 Woven all-weather wicker over powder coated aluminum frame.
 Weave Colors - Willow or Sienna
 Cushion - C2601



84



W	48"
D	24.5"
H	33.5"
SH	17.5"

Havana
 2602 : Straight Dining Bench
 Woven all-weather wicker over powder coated aluminum frame.
 Weave Colors - Willow or Sienna
 Cushion - C2602



84



W	54"
L	80"
H	29"

Havana
 2641 : 54" x 80" Table
 (with parasol hole)
 Woven all-weather wicker over powder coated aluminum frame. Powder coated aluminum table top.
 Weave Colors - Willow or Sienna
 Seats - 10



84



D	54"
H	29"

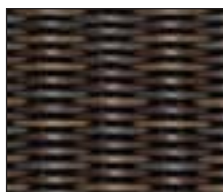
Havana
 2631 : 54" Round Table
 (with parasol hole)
 Woven all-weather wicker over powder coated aluminum frame. Powder coated aluminum table top.
 Weave Colors - Willow or Sienna
 Seats - 6

HAVANA WICKER COLORS

The Havana dining items detailed on this page are available in either Willow or Sienna color all-weather wicker.



WILLOW



SIENNA



85

Havana
318 : Deep Seating Ottoman
Woven all-weather wicker over powder coated aluminum frame.
Weave Colors - Willow or Sienna
Cushion - Required
See pages 146 to 157 for fabric options

W 25"
D 26"
H 16.5"



78, 81

Havana
307 : Deep Seating Armchair
Woven all-weather wicker over powder coated aluminum frame.
Weave Colors - Willow or Sienna
Cushions - Required
See pages 146 to 157 for fabric options

W 30"
D 36"
H 33.5"
SH 16.5"
AH 23"



Havana

2611 : Deep Seating Round Ottoman
Woven all-weather wicker over powder coated aluminum frame.
Weave Colors - Willow or Sienna
Cushion - Required
See pages 146 to 157 for fabric options

D 48"
H 16.5"



83

Havana
319 : Deep Seating Sofa
Woven all-weather wicker over powder coated aluminum frame.
Weave Colors - Willow or Sienna
Cushions - Required
See pages 146 to 157 for fabric options

W 65"
D 36"
H 33.5"
SH 16.5"
AH 23"



85

Havana
2610 : Deep Seating Curved Sofa
Woven all-weather wicker over powder coated aluminum frame.
Weave Colors - Willow or Sienna
Cushions - Required
See pages 146 to 157 for fabric options

W 97"
D 26.5"
H 33.5"
SH 16.5"
AH 25.5"



85

Havana
2670 : Round Side Table
Woven all-weather wicker over powder coated aluminum frame. Powder coated aluminum table top.
Weave Colors - Willow or Sienna

D 22.5"
H 19"



Havana

2672 : Coffee Table
Woven all-weather wicker over powder coated aluminum frame. Powder coated aluminum table top.
Weave Colors - Willow or Sienna

W 45"
D 24.5"
H 19"



78

Havana
2671 : Round Conversation Table
Woven all-weather wicker over powder coated aluminum frame. Powder coated aluminum table top.
Weave Colors - Willow or Sienna

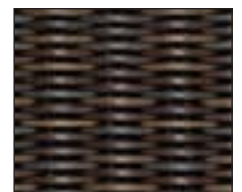
D 46"
H 19"

HAVANA WICKER COLORS

The Havana deep seating items detailed on this page are available in either Willow or Sienna color all-weather wicker.



WILLOW



SIENNA



HAVANA MODULAR



86, 88



W 38"
D 38"
H 30.5"
SH 17"

Havana Modular
443 : Lounge Chair
Woven all-weather wicker over powder coated aluminum frame.
Weave Color - Willow
Cushions - Required
See pages 146 to 157 for fabric options



86, 89



W 38"
D 38"
H 30.5"
SH 17"

Havana Modular
441 : Right Corner Unit
Woven all-weather wicker over powder coated aluminum frame.
Weave Color - Willow
Cushions - Required
See pages 146 to 157 for fabric options



86, 88, 89



W 38"
D 38"
H 30.5"
SH 17"

Havana Modular
442 : Centre Unit
Woven all-weather wicker over powder coated aluminum frame.
Weave Color - Willow
Cushions - Required
See pages 146 to 157 for fabric options



86, 88, 89



W 38"
D 38"
H 30.5"
SH 17"

Havana Modular
440A : Left End Unit
Woven all-weather wicker over powder coated aluminum frame.
Weave Color - Willow
Cushions - Required
See pages 146 to 157 for fabric options



86, 88, 89



W 38"
D 38"
H 30.5"
SH 17"

Havana Modular
441A : Right End Unit
Woven all-weather wicker over powder coated aluminum frame.
Weave Color - Willow
Cushions - Required
See pages 146 to 157 for fabric options



86, 88, 89



W 38"
D 38"
H 17"

Havana Modular
444 : Ottoman
Woven all-weather wicker over powder coated aluminum frame.
Weave Color - Willow
Cushions - Required
See pages 146 to 157 for fabric options



86, 88, 89



W 38"
D 38"
H 15"

Havana Modular
438 : Coffee Table
Woven all-weather wicker over powder coated aluminum frame.
Weave Color - Willow



86, 88, 89



W 17"
D 17"
H 17"

Havana Modular
439 : Side Table
Woven all-weather wicker over powder coated aluminum frame.
Weave Color - Willow



100

Eclipse
357CAN : Sail
Sunbrella® 100% acrylic fabric.
Fabric Color - Canvas
Accessory - 357CR Cover

H 60"



Eclipse
359J : Footstool
Woven all-weather wicker over powder coated aluminum frame.
Weave Color - Java
Cushion - Required
See pages 146 to 157 for fabric options
Accessory - 359CR Cover

W 65.5"
D 36"
H 17.5"



Eclipse
356J : Relaxer
Woven all-weather wicker over powder coated aluminum frame.
Weave Color - Java
Cushions - Required
See pages 146 to 157 for fabric options
Accessories - 357 Sail, 356CR Cover

W 65.5"
D 56.5"
H 32.5"
SH 17.5"



Eclipse
358J : Side Table
Woven all-weather wicker over powder coated aluminum frame with Midnight color ceramic table top.
Weave Color - Java
Accessory - 358CR Cover

W 20.5"
L 26"
H 14.5"



Eclipse
353J : Deep Seating Armchair
Woven all-weather wicker over powder coated aluminum frame.
Weave Color - Java
Cushions - Required
See pages 146 to 157 for fabric options
Accessory - 353CR Cover

W 40.5"
D 37.5"
H 31.5"
SH 17.5"



Eclipse
357PB : Sail
Sunbrella® 100% acrylic fabric.
Fabric Color - Pebble
Accessory - 357CR Cover

H 60"



Eclipse
359D : Footstool
Woven all-weather wicker over powder coated aluminum frame.
Weave Color - Driftwood
Cushion - Required
See pages 146 to 157 for fabric options
Accessory - 359CR Cover

W 65.5"
D 36"
H 17.5"



Eclipse
356D : Relaxer
Woven all-weather wicker over powder coated aluminum frame.
Weave Color - Driftwood
Cushions - Required
See pages 146 to 157 for fabric options
Accessory - 357 Sail, 356CR Cover

W 65.5"
D 56.5"
H 32.5"
SH 17.5"



Eclipse
358D : Side Table
Woven all-weather wicker over powder coated aluminum frame with Midnight color ceramic table top.
Weave Color - Driftwood
Accessory - 358CR Cover

W 20.5"
L 26"
H 14.5"



Eclipse
353D : Deep Seating Armchair
Woven all-weather wicker over powder coated aluminum frame.
Weave Color - Driftwood
Cushions - Required
See pages 146 to 157 for fabric options
Accessory - 353CR Cover

W 40.5"
D 37.5"
H 31.5"
SH 17.5"

PLANTATION SECTIONAL



90



W 30.5"
D 36.5"
H 35.5"
SH 19"
AH 25"

Plantation

580M : Reclining Armchair - Teak Arms
Woven all-weather wicker over powder coated aluminum frame with teak arms.
Weave Color - Mahogany
Cushions - Required
See pages 146 to 157 for fabric options



90



W 30.5"
D 36.5"
H 35.5"
SH 19"
AH 25"

Plantation

582M : Right End Unit - Teak Arms
Woven all-weather wicker over powder coated aluminum frame with teak arms.
Weave Color - Mahogany
Cushions - Required
See pages 146 to 157 for fabric options



90



W 30.5"
D 36.5"
H 35.5"
SH 19"
AH 25"

Plantation

584M : Left End Unit - Teak Arms
Woven all-weather wicker over powder coated aluminum frame with teak arms.
Weave Color - Mahogany
Cushions - Required
See pages 146 to 157 for fabric options



91



W 30.5"
D 36.5"
H 35.5"
SH 19"
AH 25"

Plantation

581M : Reclining Armchair - Woven Arms
Woven all-weather wicker over powder coated aluminum frame.
Weave Color - Mahogany
Cushions - Required
See pages 146 to 157 for fabric options



91



W 30.5"
D 36.5"
H 35.5"
SH 19"
AH 25"

Plantation

583M : Right End Unit - Woven Arms
Woven all-weather wicker over powder coated aluminum frame.
Weave Color - Mahogany
Cushions - Required
See pages 146 to 157 for fabric options



91



W 30.5"
D 36.5"
H 35.5"
SH 19"
AH 25"

Plantation

585M : Left End Unit - Woven Arms
Woven all-weather wicker over powder coated aluminum frame.
Weave Color - Mahogany
Cushions - Required
See pages 146 to 157 for fabric options



91



W 64"
D 36.5"
H 35.5"
SH 19"

Plantation

587M : Corner Unit
Woven all-weather wicker over powder coated aluminum frame.
Weave Color - Mahogany
Cushions - Required
See pages 146 to 157 for fabric options



91



W 25.5"
D 36.5"
H 35.5"
SH 19"

Plantation

586M : Center Unit
Woven all-weather wicker over powder coated aluminum frame.
Weave Color - Mahogany
Cushions - Required
See pages 146 to 157 for fabric options



90



W 49"
D 36.5"
H 35.5"
SH 19"

Plantation

588M : Wedge Unit
Woven all-weather wicker over powder coated aluminum frame.
Weave Color - Mahogany
Cushions - Required
See pages 146 to 157 for fabric options



90



W 25.5"
D 25.5"
H 19"

Plantation

589M : Square Ottoman Unit
Woven all-weather wicker over powder coated aluminum frame.
Weave Color - Mahogany
Cushion - Required
See pages 146 to 157 for fabric options



90



D 47.5"
H 19"

Plantation

590M : Round Ottoman Unit
Woven all-weather wicker over powder coated aluminum frame.
Weave Color - Mahogany
Cushion - Required
See pages 146 to 157 for fabric options

PLANTATION SECTIONAL



Plantation
592M : Elliptical Coffee Table
Woven all-weather wicker over powder coated aluminum frame with tempered glass table top.
Weave Color - Mahogany

W 27.5"
L 47.5"
H 19"



Plantation
591M : Round Coffee Table
Woven all-weather wicker over powder coated aluminum frame with tempered glass table top.
Weave Color - Mahogany


91

D 47.5"
H 19"



Plantation
594M : Side Table
Woven all-weather wicker over powder coated aluminum frame with tempered glass table top.
Weave Color - Mahogany


90

D 24"
H 19"



Plantation
593M : Round Lamp Table
Woven all-weather wicker over powder coated aluminum frame with tempered glass table top.
Weave Color - Mahogany

D 21"
H 23"



PLANTATION



W 24"
D 26"
H 34.5"
SH 17"
AH 25"

Plantation
980M : Dining Chair with Arms
Woven all-weather wicker over powder coated aluminum frame with teak arms.
Weave Color - Mahogany
Cushion - C09



W 22"
D 26"
H 34.5"
SH 17"

Plantation
361M : Dining Chair
Woven all-weather wicker over powder coated aluminum frame.
Weave Color - Mahogany
Cushion - C30



W 47"
L 94.5"
H 28.5"

Plantation
315M : 47" x 94.5" Boat Shaped Table - Woven Top (with parasol hole)
Woven all-weather wicker over powder coated aluminum frame.
Weave Color - Mahogany
Seats - 8
Accessory - 315G Glass Top



W 44"
L 75"
H 28.5"

Plantation
314M : 44" x 75" Boat Shaped Table - Woven Top (with parasol hole)
Woven all-weather wicker over powder coated aluminum frame.
Weave Color - Mahogany
Seats - 6
Accessory - 314G Glass Top



D 53.5"
H 28.5"

Plantation
301M : 53.5" Round Table - Woven Top (with parasol hole)
Woven all-weather wicker over powder coated aluminum frame.
Weave Color - Mahogany
Seats - 5
Accessory - 301G Glass Top



W 49.5"
L 102.5"
H 28.5"

Plantation
316M : 49.5" x 102.5" Boat Shaped Table - Teak Top (with parasol hole)
Woven all-weather wicker over powder coated aluminum frame with slatted teak table top.
Weave Color - Mahogany
Seats - 8



W 44.5"
L 78.5"
H 28.5"

Plantation
317M : 44.5" x 78.5" Boat Shaped Table - Teak Top (with parasol hole)
Woven all-weather wicker over powder coated aluminum frame with slatted teak table top.
Weave Color - Mahogany
Seats - 6



D 53.5"
H 28.5"

Plantation
302M : 53.5" Round Table - Teak Top (with parasol hole)
Woven all-weather wicker over powder coated aluminum frame with slatted teak table top.
Weave Color - Mahogany
Seats - 5



W 23.5"
D 27"
H 44.5"
SH 28.5"
AH 37"

Plantation
622M : Swivel Bar Chair with Arms
Woven all-weather wicker over powder coated aluminum frame with teak arms & copper trim on foot rails.
Weave Color - Mahogany
Cushion - C09



W 22"
D 25"
H 43.5"
SH 28"

Plantation
621M : Bar Chair
Woven all-weather wicker over powder coated aluminum frame with copper trim on foot rails.
Weave Color - Mahogany
Cushion - C30



W 48"
L 48"
H 40"

Plantation
671M : 48" Square Bar Table - Woven Top (with parasol hole)
Woven all-weather wicker over powder coated aluminum frame.
Weave Color - Mahogany
Seats - 4
Accessory - 671G Glass Top



93

Plantation

988M : Deep Seating Armchair
Woven all-weather wicker over powder coated aluminum frame with teak arms.
Weave Color - Mahogany
Cushions - Required
See pages 146 to 157 for fabric options

W	29"
D	35.5"
H	32.5"
SH	19.5"
AH	25"



Plantation

660M : Deep Seating Swivel Glider
Woven all-weather wicker over powder coated aluminum frame with teak arms.
Weave Color - Mahogany
Cushions - Required
See pages 146 to 157 for fabric options

W	28.5"
D	33"
H	32.5"
SH	20"
AH	24.5"



Plantation

628M : Deep Seating Spring Rocker
Woven all-weather wicker over powder coated aluminum frame with teak arms.
Weave Color - Mahogany
Cushions - Required
See pages 146 to 157 for fabric options

W	28.5"
D	34.5"
H	32.5"
SH	19.5"
AH	25"



Plantation

989M : Deep Seating Ottoman
Woven all-weather wicker over powder coated aluminum frame.
Weave Color - Mahogany
Cushion - Required
See pages 146 to 157 for fabric options

W	26"
D	22.5"
H	18.5"



Plantation

990M : Deep Seating 2-Seater Sofa
Woven all-weather wicker over powder coated aluminum frame with teak arms.
Weave Color - Mahogany
Cushions - Required
See pages 146 to 157 for fabric options

W	53"
D	34.5"
H	32.5"
SH	19.5"
AH	25"



93



Plantation

995M : Deep Seating 3-Seater Sofa
Woven all-weather wicker over powder coated aluminum frame with teak arms.
Weave Color - Mahogany
Cushions - Required
See pages 146 to 157 for fabric options

W	78.5"
D	34.5"
H	32.5"
SH	19.5"
AH	25"



Plantation

365M : Side Table
Woven all-weather wicker over powder coated aluminum frame with teak rimmed, tempered glass table top.
Weave Color - Mahogany

W	25"
L	20"
H	18"



Plantation

364M : Coffee Table
Woven all-weather wicker over powder coated aluminum frame with teak rimmed, tempered glass table top.
Weave Color - Mahogany

W	48"
L	30.5"
H	18"



93



Plantation

629M : Square Conversation Table
Woven all-weather wicker over powder coated aluminum frame with teak rimmed, tempered glass table top.
Weave Color - Mahogany

W	39.5"
L	39.5"
H	21.5"



Plantation

718M : Deep Seating Chaise
Woven all-weather wicker over powder coated aluminum frame with teak arms.
Weave Color - Mahogany
Back Positions - Infinite
Cushion - Required
See pages 146 to 157 for fabric options

W	28.5"
L	85.5"
H	42"
SH	22.5"
AH	23"



Plantation

362M : Rocking Chair
Woven all-weather wicker over powder coated aluminum frame with teak rockers & arms.
Weave Color - Mahogany
Cushions - Required
See pages 146 to 157 for fabric options

W	26"
D	35.5"
H	36.5"
SH	17"
AH	23.5"



CASABLANCA



W 24.5"
D 26"
H 37"
SH 16.5"
AH 25"

Casablanca
646 : Large Dining Chair with Arms
Woven all-weather wicker over powder coated aluminum frame with teak handle.
Weave Color - Cappuccino
Cushion - C75



W 21.5"
D 28.5"
H 37"
SH 16.5"

Casablanca
654 : Large Dining Chair
Woven all-weather wicker over powder coated aluminum frame with teak handle.
Weave Color - Cappuccino
Cushion - C82



D 51"
H 29.5"

Casablanca
691 : 51" Round Table
(with parasol hole)
Woven all-weather wicker over powder coated aluminum frame.
Weave Color - Cappuccino
Seats - 4
Accessory - 691G Glass Top



W 30.5"
L 78"
H 38.5"
SH 16.5"
AH 21.5"

Casablanca
658 : Lounger
Woven all-weather wicker over powder coated aluminum frame with teak handle.
Weave Color - Cappuccino
Back Positions - Infinite
Cushion - Required
See pages 146 to 157 for fabric options



37



W 45.5"
L 94.5"
H 29"

Square XL
408 : 45.5" x 94.5" Table
(without parasol hole)
Teak frame with slatted teak table top.
Seats - 8



W 36"
L 62"
H 29"

Square XL
407 : 36" x 62" Table
(without parasol hole)
Teak frame with slatted teak table top.
Seats - 6



W 36"
L 36"
H 29"

Square XL
406 : 36" x 36" Table
(without parasol hole)
Teak frame with slatted teak table top.
Seats - 4



Casablanca
640 : Deep Seating Armchair
Woven all-weather wicker over powder coated aluminum frame with teak handle.
Weave Color - Cappuccino
Cushions - Required
See pages 146 to 157 for fabric options

W 31.5"
D 35"
H 37"
SH 20"
AH 25"



Casablanca
661 : Deep Seating Swivel Glider
Woven all-weather wicker over powder coated aluminum frame with teak handle.
Weave Color - Cappuccino
Cushions - Required
See pages 146 to 157 for fabric options



94

W 31"
D 35"
H 37"
SH 21.5"
AH 26"



Casablanca
662 : Deep Seating Reclining Armchair
Woven all-weather wicker over powder coated aluminum frame with teak handle.
Back Positions - 3
Weave Color - Cappuccino
Cushions - Required
See pages 146 to 157 for fabric options



95

W 34.5"
D 40"
H 42"
SH 21"
AH 25.5"



Casablanca
643 : Deep Seating Ottoman
Woven all-weather wicker over powder coated aluminum frame.
Weave Color - Cappuccino
Cushion - Required
See pages 146 to 157 for fabric options

W 25.5"
D 23"
H 18"



Casablanca
641 : Deep Seating 2-Seater Sofa
Woven all-weather wicker over powder coated aluminum frame.
Weave Color - Cappuccino
Cushions - Required
See pages 146 to 157 for fabric options

W 54.5"
D 35"
H 37"
SH 20"
AH 25"



Casablanca
642 : Deep Seating 3-Seater Sofa
Woven all-weather wicker over powder coated aluminum frame.
Weave Color - Cappuccino
Cushions - Required
See pages 146 to 157 for fabric options

W 78.5"
D 35"
H 37"
SH 20"
AH 25"



Casablanca
663 : Cocktail Table
Woven all-weather wicker over powder coated aluminum frame (without parasol hole).
Weave Color - Cappuccino
Accessory - 663G Glass Top



95

W 29.5"
L 47.5"
H 18"



Casablanca
664 : Round Chat Table
Woven all-weather wicker over powder coated aluminum frame (without parasol hole).
Weave Color - Cappuccino
Accessory - 664G Glass Top



94

D 48"
H 24"



Casablanca
644 : Round Side Table
Woven all-weather wicker over powder coated aluminum frame (without parasol hole).
Weave Color - Cappuccino
Accessory - 644G Glass Top

D 21.5"
H 18"



Casablanca
665 : Round Lamp Table
Woven all-weather wicker over powder coated aluminum frame
Weave Color - Cappuccino
Accessory - 665G Glass Top

D 23"
H 23"



Casablanca
645 : Round Conversation Table
Woven all-weather wicker over powder coated aluminum frame (without parasol hole).
Weave Color - Cappuccino
Accessory - 645G Glass Top

D 41.5"
H 18"

HORIZON



99



W 40.5"
D 34"
H 33.5"
SH 19"
AH 25"

Horizon
700 : Deep Seating Armchair
Woven all-weather wicker over powder coated aluminum frame.
Weave Color - Ebony
Cushions - Required
See pages 146 to 157 for fabric options



W 34"
D 34"
H 33.5"
SH 19"

Horizon
704 : Deep Seating Modular Corner Unit
Woven all-weather wicker over powder coated aluminum frame.
Weave Color - Ebony
Cushions - Required
See pages 146 to 157 for fabric options



W 66.5"
D 38"
H 33.5"
SH 19"

Horizon
708 : Deep Seating Modular External Corner Unit
Woven all-weather wicker over powder coated aluminum frame.
Weave Color - Ebony / Cushions - Required
See pages 146 to 157 for fabric options



W 41.5"
D 35.5"
H 33.5"
SH 19"

Horizon
709 : Deep Seating Modular Wedge Unit
Woven all-weather wicker over powder coated aluminum frame.
Weave Color - Ebony
Cushions - Required
See pages 146 to 157 for fabric options



98



W 34"
D 34"
H 33.5"
SH 19"
AH 25"

Horizon
701 : Deep Seating Modular Left End Unit
Woven all-weather wicker over powder coated aluminum frame.
Weave Color - Ebony
Cushions - Required
See pages 146 to 157 for fabric options



98



W 34"
D 34"
H 33.5"
SH 19"
AH 25"

Horizon
702 : Deep Seating Modular Right End Unit
Woven all-weather wicker over powder coated aluminum frame.
Weave Color - Ebony
Cushions - Required
See pages 146 to 157 for fabric options



98



W 28.5"
D 34"
H 33.5"
SH 19"

Horizon
703 : Deep Seating Modular Center Unit
Woven all-weather wicker over powder coated aluminum frame.
Weave Color - Ebony
Cushions - Required
See pages 146 to 157 for fabric options



W 28.5"
D 28.5"
H 19"

Horizon
705 : Deep Seating Ottoman
Woven all-weather wicker over powder coated aluminum frame.
Weave Color - Ebony
Cushion - Required
See pages 146 to 157 for fabric options

HORIZON CLUB



Horizon Club
694 : Deep Seating Modular Center Unit
Woven all-weather wicker over powder coated aluminum frame.
Weave Color - Ebony
Cushions - Required
See pages 146 to 157 for fabric options

W	39"
D	40"
H	32.5"
SH	19"



Horizon Club
693 : Deep Seating Modular Right End Unit
Woven all-weather wicker over powder coated aluminum frame.
Weave Color - Ebony
Cushions - Required
See pages 146 to 157 for fabric options


96, 97



Horizon Club
692 : Deep Seating Modular Left End Unit
Woven all-weather wicker over powder coated aluminum frame.
Weave Color - Ebony
Cushions - Required
See pages 146 to 157 for fabric options


96, 97



Horizon Club
695 : Deep Seating Square Ottoman
Woven all-weather wicker over powder coated aluminum frame.
Weave Color - Ebony
Cushion - Required
See pages 146 to 157 for fabric options

W	39"
D	39"
H	19"



Horizon Club
696 : Deep Seating Curved Ottoman
Woven all-weather wicker over powder coated aluminum frame.
Weave Color - Ebony
Cushion - Required
See pages 146 to 157 for fabric options


96, 97



Horizon
699E : Small Round Conversation Table
Woven all-weather wicker over powder coated aluminum frame.
Weave Color - Ebony

D	48"
H	18.5"



Horizon Club
697 : Round Side Table
Woven all-weather wicker over powder coated aluminum frame.
Weave Color - Ebony


96, 97, 98

D	24"
H	19"

Important Note - Horizon & Horizon Club Deep Seating components only fit with like pieces.



FABRIC COLLECTIONS

CAPRI COLLECTION



CAPRI
GRADE A



CANVAS
GRADE A



MACAW
GRADE A



CAPRI SUMAN
GRADE C



CAPRI PINSTRIPE
GRADE C



MACAW MOSAIC
GRADE C

AQUA COLLECTION



CANVAS
GRADE A



AQUA
GRADE A



AQUA SCOOP
GRADE B



KIWI
GRADE A



AQUA BEJWELED
GRADE C



AQUA STRIPE
GRADE B



AQUA RHYTHM
GRADE C



AQUA RURAL
GRADE B



AQUA SUMMER
GRADE D



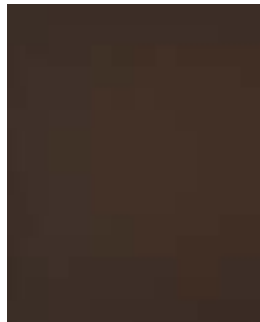
KIWI COLLECTION



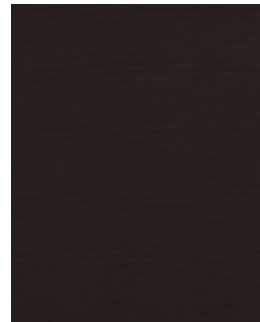
LINEN
GRADE A



BROWN MUSIC
GRADE B



KONA
GRADE A



WALNUT
GRADE A



KIWI
GRADE A



KIWI OSAKA
GRADE D



KIWI STRATA
GRADE B



KIWI OSTRICH
GRADE C



KIWI STRIPE
GRADE B

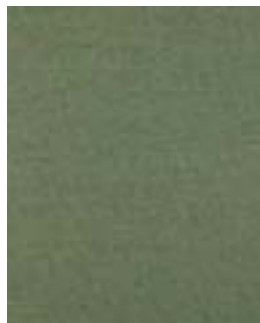


KIWI SCOOP
GRADE B

FERN COLLECTION



WHITE QUARTZ
GRADE C



FERN
GRADE A



CANVAS RURAL
GRADE B



CANVAS
GRADE A



FERN FROND
GRADE D



MEADOW
GRADE C



LINEN
GRADE A



NUTMEG
GRADE C



LAURAL
GRADE B



FABRIC COLLECTIONS

SPICE COLLECTION



SPICE
GRADE A



NUTMEG
GRADE C



SPICE
EVERGLADE
GRADE A



LINEN
GRADE A



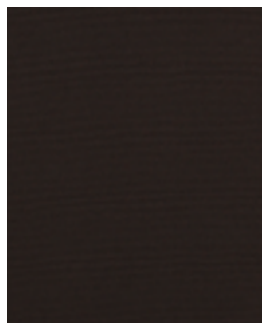
SAFFRON
GRADE C



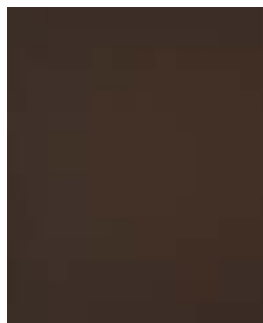
RUSTIC SPICE
GRADE C



SPICE VOLTERRA
GRADE C



WALNUT
GRADE A



KONA
GRADE A



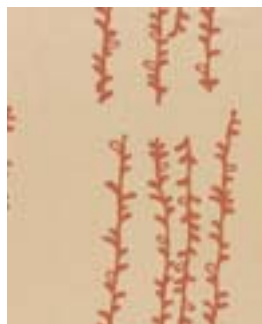
SPICE PLUSH
GRADE C



SPICE
BOXY STRIPE
GRADE C



SPICE STRAND
GRADE D

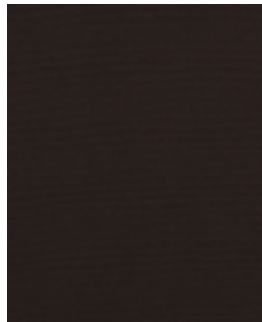


SPICE WILLOW
GRADE A

FABRIC COLLECTIONS



TUSCAN COLLECTION



WALNUT
GRADE A



LINEN
GRADE A



TUSCAN RURAL
GRADE B



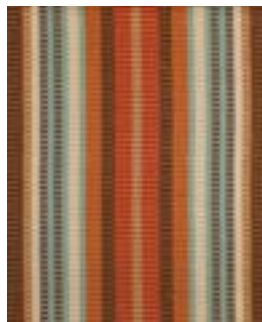
CANVAS
GRADE A



TUSCAN
GRADE A



TUSCAN SUMMER
GRADE D



TUSCAN STRIPE
GRADE C



TUSCAN
CHEETAH
GRADE C



TUSCAN
VOLTERRA
GRADE C



BROWN CHEETAH
GRADE C



KONA
GRADE A

PAPRIKA COLLECTION



RAFFIA PAPRIKA
GRADE C



PAPRIKA
BEJEWELED
GRADE C



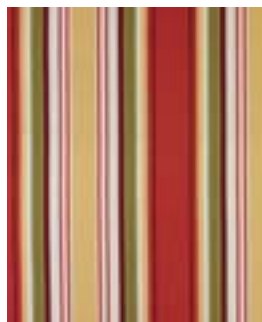
CANVAS
GRADE A



PAPRIKA
GRADE A



PAPRIKA
SUMMER
GRADE D



SUNDANCE
STRIPE
GRADE B



VANILLA
GRADE C



KIWI
GRADE A



FABRIC COLLECTIONS

YELLOW COLLECTION



NEVADA
GRADE B



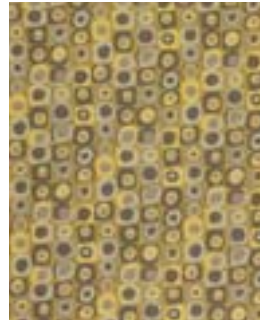
DEW
GRADE B



YELLOW RHYTHM
GRADE C



VELD
GRADE C



CACTUS
GRADE D



SIERRA
GRADE C



DESERT
GRADE C



HARVEST
GRADE D



BLOOM
GRADE D



YELLOW FLOURISH
GRADE D

BERRY COLLECTION



PLUM
GRADE C



BERRY RHYTHM
GRADE C



DEW
GRADE B



MULBERRY
GRADE C



BRAMBLE
GRADE C



BERRY BLOOM
GRADE D

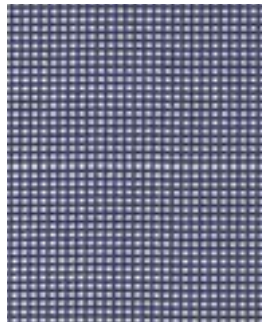
FABRIC COLLECTIONS



NAVY COLLECTION



NAVY JINGA
GRADE B



NAVY WELLCRAFT
GRADE C



CANVAS RURAL
GRADE B



CANVAS
GRADE A



NAVY
GRADE A



NAVY MILAN
GRADE D



TIDAL
GRADE C



NAVY STRIPE
GRADE B



NAVY PLUSH
GRADE C



NAVY SCOOP
GRADE B

RED COLLECTION



RED WELLCRAFT
GRADE C



RED MANOMET
GRADE C



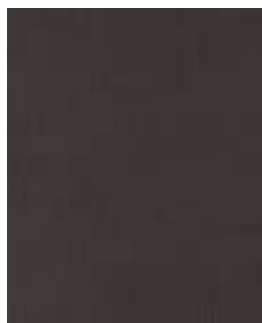
CANVAS
GRADE A



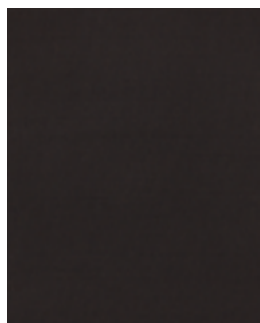
RED
GRADE A



RED LEAF
GRADE D



BLACK ONYX
GRADE C



CHARCOAL
GRADE A



CARBON GRANITE
GRADE C

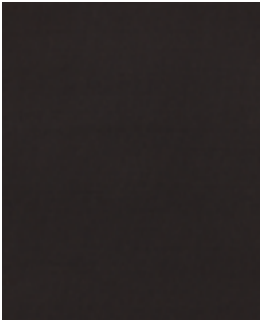


PLATINUM
MARBLE
GRADE C



FABRIC COLLECTIONS

CHARCOAL COLLECTION



CHARCOAL
GRADE A



LINEN
GRADE A



CANVAS
GRADE A



PEBBLE
GRADE A



CHARCOAL
VOLTERRA
GRADE C



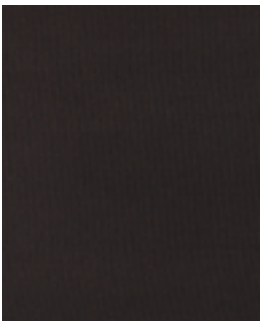
CHARCOAL JINGA
GRADE B



SILVER
EVERGLADE
GRADE A



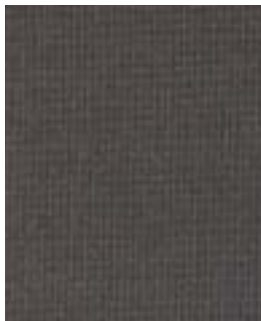
WHITE QUARTZ
GRADE C



BLACK ONYX
GRADE C



PLATINUM
MARBLE
GRADE C



CARBON GRANITE
GRADE C



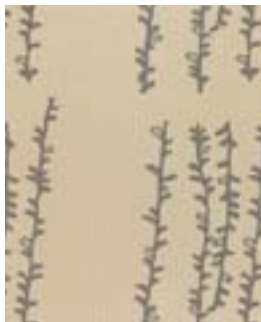
CIRCULAR MOTION
(CANVAS)
GRADE C



CIRCULAR MOTION
(BLACK)
GRADE C



CHARCOAL
PINSTRIPES
GRADE C



SILVER WILLOW
GRADE A



BLACK CHECK
GRADE D



BEIGE CHECK
GRADE D



FINESSE COLLECTION



RED GRANDE
GRADE D



RED FINESSE
GRADE D



YELLOW TOTALE
GRADE D



RED TOTALE
GRADE D



BLACK GRANDE
GRADE D



BLACK FINESSE
GRADE D



WHITE TOTALE
GRADE D



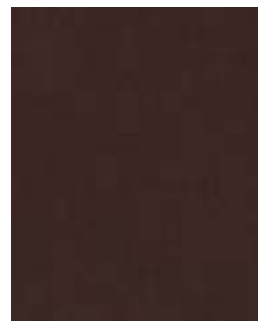
BLACK TOTALE
GRADE D



BLUE GRANDE
GRADE D



BLUE FINESSE
GRADE D



BROWN TOTALE
GRADE D



BLUE TOTALE
GRADE D



FABRIC COLLECTIONS

RUSTIC COLLECTION



COAST
GRADE C



OCEAN
GRADE C



BRUSH
GRADE C



FIELD
GRADE C



EARTH
GRADE C



SCAPE
GRADE C



RUNE
GRADE C



MOUNTAIN
GRADE C

SLINGS



CANVAS



CHARCOAL



MARINE



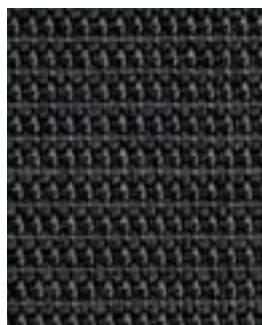
PEBBLE



IVORY



MERCURY



ONYX



TAUPE

Azore available in Charcoal or Mercury.
 Bloc available in Ivory or Mercury.
 Clevedon, Solana & Wimbledon available in Canvas, Charcoal, Marine or Pebble.
 Cloud available in Ivory, Onyx or Taupe.
 Fusion available in Mercury only.
 Luna available in Charcoal only.
 Vigo available in Charcoal only.



Fabric & Cushion Availability

Cushions are stocked in select fabrics which vary by collection (as per table below).

COLLECTIONS	AQUA	CANVAS	DEW	FERN	NAVY	PEBBLE	PLUM	SPICE	VANILLA	WALNUT
Anassa										
Axis										
Casablanca										
Eclipse										
Halifax										
Havana										
Havana Modular										
Horizon										
Kingston										
Plantation										
Ventura										

The following collections have no stock cushions - Adirondack, Azore, Belmont, Clevedon, Estrada, Geneva, Horizon Club, Madison, Nexus & Weston.

COM (Customer's Own Material) services are offered for all cushions priced as GRADE C. Gloster Furniture does not warranty COM fabrics.

All COM orders must submit a 12" x 12" fabric swatch for approval & complete the COM form to determine yardage required.

CSC (Customer's Special Construction) services are offered for all cushions priced as GRADE D.

NSP (Non-Standard Piping) services are offered for all cushions priced at a one grade upcharge from the primary fabric grade (for example... Kiwi (GRADE A) fabric with Kiwi Ostrich (GRADE C) piping will be priced at GRADE B pricing). NSP services for primary fabric GRADE D are offered with a 7% upcharge.

See swatch book for complete fabric range.

All non-stocked cushions have an extended lead time.

SOS (Special Order Sunbrella) services should refer to the chart below for pricing grades.

SOS - SPECIAL ORDER SUNBRELLA

SUNBRELLA STOCK		HIGH POINT III	
SERIES	GRADE	SERIES	GRADE
48, 51	B	40	C
54, 56, 77, 80, 83, 85	C	All Else	D
30, 32, 40, 42, 44, 45, 70, 72, 73	D		



OPTIONAL CUSHIONS

CODE	TO FIT ITEM OF FURNITURE	WIDTH	DEPTH	THICKNESS
ALDC	Anassa Dining Chair w/Arms-Louvered Back-Mocha (Seat)	24	20.5	3.5
	Anassa Dining Chair w/Arms-Louvered Back-Mocha (Back)	23.5	18.5	6
ALSC	Anassa Dining Chair-Louvered Back-Mocha (Seat)	22.5	21	3.5
	Anassa Dining Chair-Louvered Back-Mocha (Back)	21.5	17	5
AWDC	Anassa Dining Chair w/Arms-Woven-Saddle (Seat)	19.5	19	3.5
	Anassa Dining Chair w/Arms-Woven-Saddle (Back)	23.5	18.5	6
AWSC	Anassa Dining Chair-Woven-Saddle (Seat)	20.5	18.25	3.5
	Anassa Dining Chair-Woven-Saddle (Back)	21.5	17	5
ATP	Anassa 23.5" x 18.5" Throw Pillow	23.5	18.5	6
C01	Ventura Dining Chair & Weston High Back Folding Chair w/Arms	18	17.5	2.75
C02	Kingston Dining Chair	18	18	3.75
C05	Kingston Bar & Stacking Chair	17.5	16.5	3.25
C07	Geneva Stacking Chair, Stacking Chair w/Arms & Nexus Stacking Chair w/Arms	17.5	19	3
C09	Plantation Dining Chair w/Arms & Swivel Bar Chair w/Arms	23	18.5	2.25
C12	Adirondack Seat & Estate Adirondack Seat (Seat)	21.5	17	3.25
	Adirondack Seat & Estate Adirondack Seat (Back)	19.75	28	2.5
C16	Kingston 4.5ft Bench	49	20	3.5
C18	Kingston 5.5ft Bench	62	20	4
C19	Estate Marlborough Bench	67	19	3.25
C20	16" Throw Pillow (Welt)	16	16	6.5
C21	Universal Headrest Cushion-Fabric	14	6.25	4
C23	Weston High Back Folding Chair	17	17	2.75
C24	Kingston Rocking Chair	21.5	18	4
C25	Madison 6ft Backless Bench	18	69	4
C28	Ventura Dining Chair w/Arms (Notched)	23	18.5	2.5
C29	23.5" x 14.5" Kidney Pillow (Welt)	23.5	14.5	7.5
C30	Plantation Dining Chair & Bar Chair	21.5	18.25	2.25
C70	20" Throw Pillow (Welt)	20	20	7.25
C71	24" Throw Pillow (Welt)	24	24	9
C72	9" x 24" Bolster Pillow (Welt)	24	9	8
C74	Kingston Dining Chair w/Arms (Notched)	20.75	18	3.5
C75	Casablanca Large Dining Chair w/Arms	19	19.75	2
C82	Casablanca Large Dining Chair	21.5	19.75	2.5

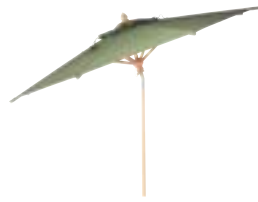
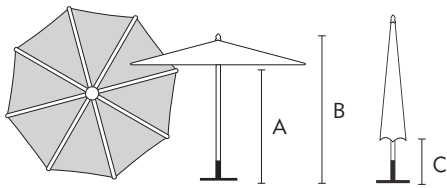
OPTIONAL CUSHIONS



CODE	TO FIT ITEM OF FURNITURE	WIDTH	DEPTH	THICKNESS
C87	13" x 20" Throw Pillow	13	20	7
C88	16" x 24" Throw Pillow	16	24	8
C89	16" Throw Pillow (No Welt)	16	16	6.5
C90	20" Throw Pillow (No Welt)	20	20	9
C91	24" Throw Pillow (No Welt)	24	24	9
C92	9" x 24" Bolster Pillow (No Welt)	23.5	9.5	9
C93	20" Round Box Throw Pillow	20	20	4.5
C94	20" x 10" Kidney Pillow (Welt)	20	10	4.5
C95	6" x 18" Bolster Pillow (Welt)	18	6	6
C96	22" x 28" Flanged Throw Pillow	22	28	7.5
C97	16" Square Box Throw Pillow	16	16	4.5
C98	20" Square Box Throw Pillow	20	20	4.5
C99	24" Square Box Throw Pillow	24	24	4.5
C334	Axis Dining Chair w/Arms	20.25	17.25	3
C335B	Axis Armchair Back	24	15	4
C335S	Axis Armchair Seat	24.75	28	4
C336	Axis Ottoman	24	19	4
C337B	Axis Sofa Back (Pair)	27	15	4
C337S	Axis Sofa Seat	55	28	4
C342	Clevedon Stacking Lounger (Seat)	24	46	5
	Clevedon Stacking Lounger (Back)	24	30	5
C405	Square Large Backless Bench	16	83	3.5
C429	Square Small Backless Bench	16	52	3.5
C510	Halifax Dining Chair w/Arms	20.5	20.5	2.25
C511	Halifax Dining Chair	21	20.5	2.25
C520	Estate Halifax Bench & Halifax Bench	69	20.5	2.25
C831	Madison 5ft Backless Bench	57	17.5	2
C1800	Belmont Dining Chair w/Arms	22.75	19	3.5
C1801	Belmont Dining Chair	17.75	19	3.5
C1902	Kingston Stacking Chair w/Arms (Notched)	20	19.5	3.5
C2600	Havana Dining Chair w/Arms	20.25	19	3
C2601	Havana Curved Dining Bench	59	17.5	3.5
C2602	Havana Straight Dining Bench	48	17.5	3.5



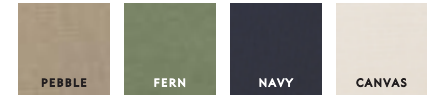
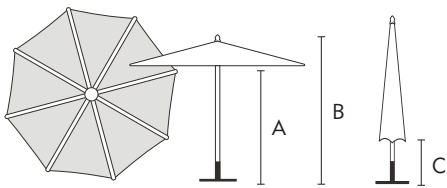
PARASOLS



Diameter	8ft 10"
(A) Height Under Canopy	86"
(B) Total Height	103"
(C) Height Under Canopy When Folded	42"
Pole Diameter	1.5"

Monaco
 P11 : Round Parasol with Tilting Mechanism
 Canopy tilts to 2 positions
 Parasol will fold down over a table top
 Bases - PB10, PB11, PC50

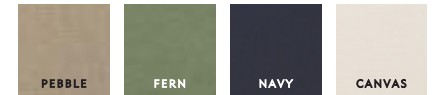
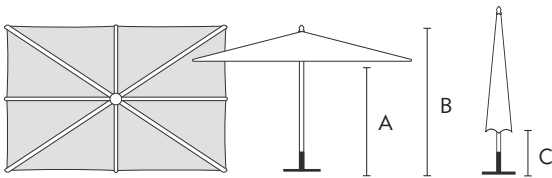
P11 Parasol is stocked in the above Grade 'A' fabrics. Other fabrics are available with an extended lead time. COM, CSC and SOS are available with an extended lead time from receipt of fabric - please ask your retailer for details.



Diameter	11ft 6"
(A) Height Under Canopy	86"
(B) Total Height	103"
(C) Height Under Canopy When Folded	29"
Pole Diameter	2"

Monaco
 P21 : Round Parasol with Tilting Mechanism
 Canopy tilts to 2 positions
 Parasol will fold down over a table top
 Bases - PB21, PB22, PC50

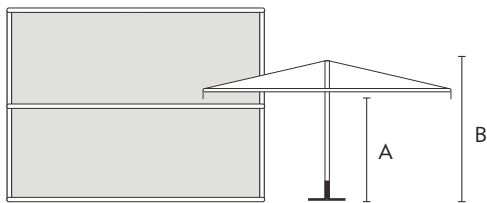
P21 Parasol is stocked in the above Grade 'A' fabrics. Other fabrics are available with an extended lead time. COM, CSC and SOS are available with an extended lead time from receipt of fabric - please ask your retailer for details.



Length	11ft 6"
Width	8ft 2"
(A) Height Under Canopy	79"
(B) Total Height	103"
(C) Height Under Canopy When Folded	12"
Pole Diameter	2"

Monaco
 P22 : Rectangular Parasol
 Parasol will not fold down over a table top
 Bases - PB20, PB21, PB22, PC50

P22 Parasol is stocked in the above Grade 'A' fabrics. Other fabrics are available with an extended lead time. COM, CSC and SOS are available with an extended lead time from receipt of fabric - please ask your retailer for details.



Length	13ft 1"
Width	9ft 10"
(A) Height Under Canopy	79.5"
(B) Total Height	95.5"
Pole Diameter	21.5"

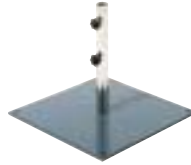
Mirage
 P40 : Rectangular Parasol
 One set of Wind Stabilizers (recommended for use in windy conditions) and two square, free-standing bases are included with the parasol.

P40 Mirage Parasol is available in Canvas only.
 The Mirage parasol is an innovative design that provides a large canopy area without the inconvenience of a central pole. The entire parasol assembly folds completely flat with the canopy neatly furled around the ridge pole.



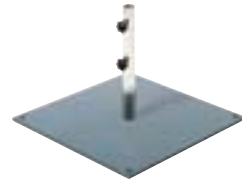
Monaco
PB10 / PB20 : Round Base
Powder-coated, galvanized steel base plate. Stainless steel tube (single clamping handle on PB10). Non-scratch plastic feet on base are removable, allowing base to be spiked into ground.

D 15.5"
W 33lb



Monaco
PB11 / PB21 : Small Square Base
Powder-coated, galvanized steel base plate. Stainless steel tube (single clamping handle on PB11). Non-scratch plastic feet on base are removable, allowing base to be spiked into ground.

W 25"
D 25"
W 90.5lb



Monaco
PB22 : Free-Standing Square Base
Powder-coated, galvanized steel base plate. Stainless steel tube. Non-scratch plastic feet on corners are removable, allowing base to be spiked into ground. Removable carrying handles included.

W 33.5"
D 33.5"
W 134lb

A60B / A61B / A65B / A66B



A60S / A61S



A50B / A51B



A50S / A51S



Monaco
Table Reducer Rings
Manufactured from solid brushed-finish stainless steel or polished brass. Designed to eliminate movement between parasol pole and table. For table/parasol applications see table below.



Monaco
PC50 : Table Clamp
Stainless steel tube. 2 plastic sleeves provided with each clamp to facilitate the correct centering of 1.5" and 2" parasol poles.

Which Parasol Base fits which Table

MODEL OF TABLE / CODES	Round Base	Small Square Base	Table Clamp
Bristol Round... 925 / 926	Y	N	Y
Bristol Round... 204	Y	Y	Y
Bristol... 918 / 385 Bristol Extending... 684 / 685 / 683 / 917	Y	Y	Y
Belmont... 1830 / 1831 Bristol... 966 Bristol Gateleg... 397 / 398 Halifax... 521 / 522 / 523 / 524 / 525	Y	Y	N
Occasional Tables... 271 / 272 / 729 Halifax... 517 / 517W / 518	Y	N	N
Havana... 2631 / 2641 Casablanca... 691	Y	Y	N
Plantation... 314 / 315 / 316 / 317 / 301 / 302 / 671	Y	Y	N

Which Reducer Ring fits which Table / Parasol

MODEL OF TABLE / CODES	(1.5" Pole) P11 Parasol	(2" Pole) P21 & P22 Parasols
Bristol Round... 925 / 926 / 204 Bristol... 918 / 385 / 966	A50S / A50B	A51S / A51B
Bristol Extending... 684 / 685 / 683 / 917 Bristol Gateleg... 397 / 398	A50S / A50B	A51S / A51B
Plantation (Teak Top)... 302 / 317 / 316	A50S / A50B	A51S / A51B
Halifax... 521 / 522 / 523 / 524 / 525 / 517 / 517W / 518	A60S / A60B	A61S / A61B
Belmont... 1830 / 1831 Occasional Tables... 271 / 272 / 729	A60S / A60B	A61S / A61B
(Woven Tables without Glass) Plantation... 314 / 315 / 301 / 671 Casablanca... 691	A65B	A66B
(Woven Tables with Glass) Plantation... 314G / 315G / 301G / 671G Casablanca... 691G	A60S / A60B	A61S / A61B



PRODUCT CARE

It goes without saying that outdoor furniture has to endure far harsher conditions than indoor furniture. From sub-zero temperatures in Winter to sweltering heat and high humidity in Summer, outdoor furniture needs to be able to endure everything mother nature throws at it.

At Gloster, we use only the finest materials in the manufacture of our products and you can ensure your furniture enjoys a long and trouble-free life with just a little basic maintenance every year.

Our woven, metal and sling products require only the most simple of cleaning regimes to keep them looking as good as new. Metal furniture can attract dirt and stains and therefore needs periodic cleaning with Gloster's 'Metal Cleaner' or 'Stainless Steel Cleaner & Polisher'.

Likewise, both our sling and man-made wicker woven furniture needs only occasional cleaning with our special non-foaming 'Sling & Woven Cleaner'.

Contrary to popular belief, teak furniture does not require any special maintenance routine or any additional protection apart from occasional cleaning. If left to age naturally outside by being exposed to light, air and rain, then the surface of the teak will gradually change to a soft, silver-grey as the pigments in the surface layer of the wood slowly start to fade away.

We recommend that you allow your teak furniture to weather naturally this way and simply clean thoroughly once or twice a year with our 'Teak Cleaner'.

To protect teak surfaces from staining and to help maintain the silver-grey patina on weathered teak, we recommend using our 'Teak Stain Protector' which repels moisture and minimizes the likelihood of stains caused by food and drinks.

If you want to retain the golden-brown color of new teak we also offer a 'Teak Sealer'. Application of 'Teak Sealer' will not affect the strength or longevity of the furniture in any way, just its appearance. If you elect to use 'Teak Sealer' you will be embarking on a regular maintenance program as 'Teak Sealer' needs to be regularly re-applied to provide continuous protection.

All of Gloster's product care items are water-based, making them both non-toxic and environmentally friendly.



VOL 25oz

Teak Cleaner

A70 : Teak Cleaner

Cleans and brightens weathered teak in one, simple step. Each bottle is supplied complete with a special applicator pad.



VOL 33oz

Teak Stain Protector

A72 : Teak Stain Protector

Repels water and moisture. Prevents stains from food and drinks. Use on weathered teak to retain silver-grey patina. Each bottle supplied complete with special applicator cloth.



VOL 33oz

Teak Sealer

A71 : Teak Sealer

Retains golden-brown color of teak. Fast and easy to apply. Resistant to mold and prevents the formation of black spots. Each bottle supplied complete with special applicator cloth.



VOL 25oz

Metal Cleaner

A74 : Metal Cleaner

Cleans and restores the new look of powder coated aluminum furniture. Each bottle is supplied complete with a special applicator pad.



VOL 33oz

Stainless Steel Cleaner & Polisher

A75 : Stainless Steel Cleaner & Polisher

Cleans and restores the new look of stainless steel furniture. Makes stainless steel repellent to dirt and water. Each bottle is supplied complete with a special applicator pad.



VOL 25oz

Sling & Woven Cleaner

A73 : Sling & Woven Cleaner

Cleans and restores sling and woven furniture. Special non-foaming formula. Each bottle is supplied complete with a special applicator pad.



Repair Kit (Mocha Stain)

Repairs minor scratches or marks. Each kit is supplied complete with all necessary products. Recommended for use on Mocha finish Anassa products only.



Wax Kit

For indoor use to provide protection from scratches or marks. Minimizes stains from food and drinks. Each kit is supplied complete with special applicator cloth. Recommended for use on Saddle & Mocha finish Anassa products only.



© COPYRIGHT GLOSTER FURNITURE 2011

All copyrights are owned by Gloster Furniture Limited. Registered designs applied for. Infringements of our copyright by any party will be vigorously pursued. Gloster reserves the right to alter or amend the descriptions and specifications given in this publication in the light of technical developments and availability of materials.

Weights can vary due to differing timber densities.

Alle in dieser broschüre enthaltenen Gloster-designe, namen und geistiges eigentum bleiben das eigentum von Gloster Furniture Limited. Wer unserem copyright zuwiderhandelt, wird strafrechtlich verfolgt. Gloster behält sich das recht vor, änderungen oder ergänzungen an beschreibungen und technischen angaben in dieser broschüre vorzunehmen, die sich infolge technischer entwicklungen und der verfügbarkeit von materialien ergeben können. Gewichtsangaben sind aufgrund der verschiedenen dichte des holzes variabel.

Tous les designs, noms et éléments de propriété intellectuelle figurant dans cette brochure sont la propriété exclusive de Gloster Furniture Limited. Toute atteinte à ces droits d'auteur, par quelque personne que ce soit, sera rigoureusement poursuivie. Gloster se réserve le droit de modifier les descriptions et caractéristiques des produits figurant dans cette brochure, en fonction de l'évolution des technologies et de la disponibilité des matériaux utilisés. Les fluctuations de densité du bois peuvent avoir un effet sur les poids indiqués.

Alle Gloster ontwerpen, namen en intellectuele eigendom gebruikt in deze brochure zijn copyright van Gloster Furniture Limited. Elke inbreuk of misbruik van ons copyright zal vervolgd worden. Gloster heeft steeds het recht om wijzigingen of toevoegingen aan te brengen aan de omschrijvingen of kenmerken vermeld in deze brochure in het licht van technische ontwikkelingen of beschikbaarheid van het materiaal. Het gewicht kan variëren als gevolg van de dichtheid van het hout.

Gloster Furniture Limited har upphovsrätt till alla Glosters designs, namn och immateriella rättigheter som ingår i denna broschyr. Intrång i vår upphovsrätt kommer att beivras. Gloster förbehåller sig rätten att göra ändringar i eller tillägg till de beskrivningar och specifikationer som ges i denna publikation med anledning av tekniska framsteg och ändrad materialtillgång. Produkternas vikt kan variera på grund av träets varierande densitet.



www.gloster.com

