

Assembly Instructions for Cantilever Base

GALTECH INTERNATIONAL

**Fill Base Completely
With All Purpose Sand**



Completed Base

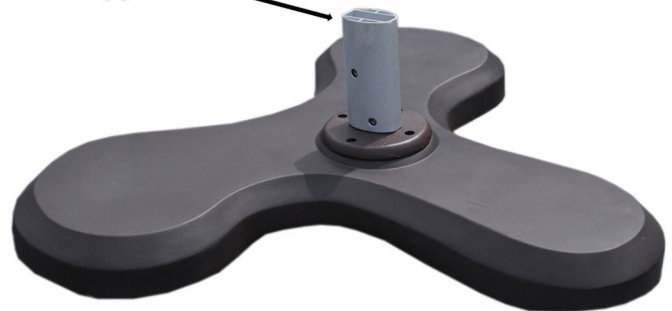


Remove the base cover shell from base.

Base requires two 50 lb bags of sand . Fill base completely to the top and smooth out sand. Gravel may also be used. **Do not use water to fill the base.**

Install base cover shell over the base and install the support post on to the base using the four screws that are provided.

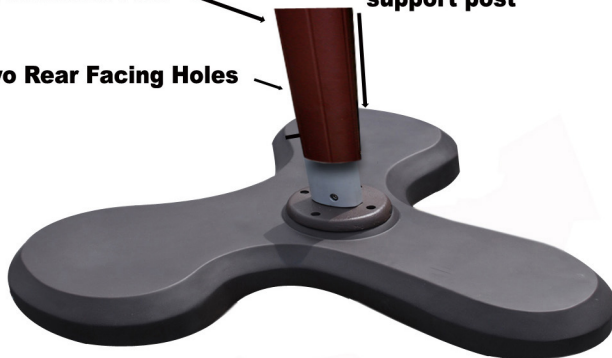
Support Post



Main Umbrella Pole

**Slide on to
support post**

Two Rear Facing Holes



Once support post is attached, slide umbrella main pole on to the support post. Make sure that the 2 rear facing holes align with the holes on the back side of the support post. Secure umbrella main pole on the support post utilizing the two screws that are provided.

DO NOT OPERATE UMBRELLA IN WINDY CONDITIONS!